

43rd Annual Production Sale

Direction

Since 1932, the **direction** at Green Garden has been to produce products for the cattle industry that will make the most net profit.

In 1983, the **direction** focused in on creating specific products for the cattle industry. The System One cattle were designed to produce a genuine source of calving-ease cattle, and as a way to maintain a more reasonable mature cow size.

The System 2 cattle were designed to add more growth without adding excessive birth weight.

In 1987, the **direction** moved to the improvement of the composition of the final product within the two system groups. The ability to grade choice or better and hang up a well-muscled carcass is important. Fifteen years of ultrasound for marbling data; supported by the Warner-Bratzler shear data and taste panel evaluation data indicate that we are moving in the right **direction**.

We firmly believe that we can have a problem free, profitable, superior carcass product in one package.

Our sale offering this year contains the most advanced calving ease genetics along with the most proven carcass genetics in the business.

Monday

1:00 p.m.

April 1, 2002

**At the farm
1 1/2 mile
south of
Lorraine, Kansas**

Green Garden Angus Farm

The Janssen Family

Established in 1932

The Green Garden Angus Sale

Dear Friends,

Welcome to the 43rd consecutive Annual Green Garden Production Sale. It will be a pleasure having you with us April 1st to appraise our sale offering. Our commitment to the livestock breeding industry has changed little from our beginning in 1932. Our goal has always been to provide the commercial cattleman with problem-free seedstock that will make him the most profit.

The use of Estimated Progeny Difference System (EPDs) has allowed us to provide you with a more predictable product. Since 1984, we have been aggressively stacking pedigrees to improve the predictability in our systematic approach to seedstock selection. This selection process gives you the opportunity to choose from a wider range of predictable products that can more accurately target the needs of your cattle operation.

For the past 15 years, we have been stacking positive carcass pedigrees and blending these genetics into our selection process. Today, you have the opportunity to make selections from seedstock that calve easy, grow rapidly to market weight, have a moderate mature size and hang up a superior carcass..

We endorse the guarantee adopted by the American Angus Association. And wish to add that we are interested in our cattle and desire to help you with any unforeseen problems related to your purchase.

We are looking forward to you visit. If we can do anything to make you stay more comfortable, please let us know.

Dick, Shelly, Elizabeth and Ben
785 - 472 - 3752



The Janssen Family
Dick, Shelly, Ben, & Elizabeth
785-472-3752

Monday, April 1, 2002
1:00 P.M.

At the farm 1 1/2 mile south of Lorraine, Kansas

Sale Day Phones:

Sale barn: 785-472-5335 Dick: 785 472 8761
Ben: 785 472 8804 Shelly: 785 472 8760

Auctioneer: Stanley Stout:
913 723 3261

Special Representatives:

Mark Gardiner - Director of the American Angus Association
Sharon Lindell - Sec./Fieldmanm, Kansas Angus Association
Barb Downing - President, Kansas Angus Association

Livestock Press Representatives:

Matt Caldwell - Angus Journal - 785-228-1364
Doug Paul, Stock Exchange - 405-840-3915
Stephen Russell - Kansas Stockman - 785-273-5115
Guy Peverley - High Plains Journal 785-456-9911

General Information

Sale location: The sale will be held at the Green Garden Angus Farm, located 1 1/2 mile south of Lorraine, Kansas.

Accommodations: Best Western Garden Inn, at Ellsworth, Kansas located at the 156 & 140 junction. 785 472-3116

Delivery: We are happy to assist with delivery arrangements, and will deduct \$50 off the purchase of any animal picked up sale day or the week of the sale.

Health: All animals will sell with interstate health papers available sale day. All bulls have been semen evaluated by Dr. Verl Carlson, Lyons Veterinary Clinic. Dr. Carlson will be on hand sale day to answer any health related questions about the sale offering.

Updated Information: Ultrasound carcass measurements and calving information will be available by Sunday March 31st. All updated information will be posted on our website as soon as available. (www.greengardenanbus.com)

Terms and Conditions: All animals will sell according to the terms and conditons fo the American Angus Association.

Announcements: Announcements from the auction block will take precedence over information printed in this catalog.

Lunch: A complimentary lunch will be served by the Smoky Hill Cattlewomen beginning at 11:30 a.m.

Predictable Genetics from Start to Finish

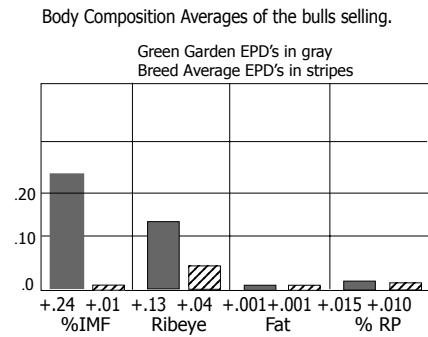
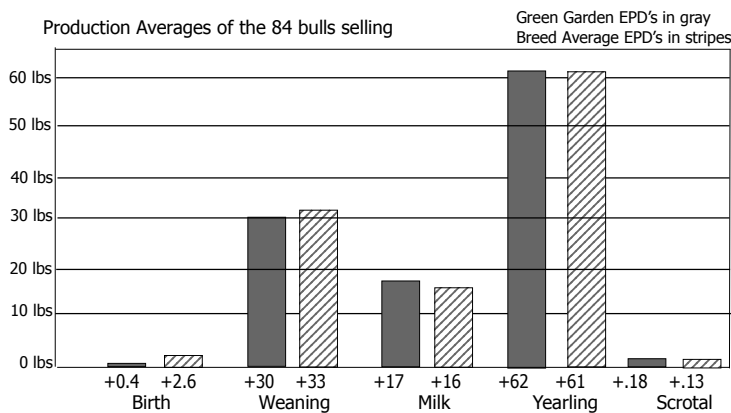
The Start: Calving Ease

In 1983, we implemented a program of stacking pedigrees to create a calving ease product, using an 18th century concept of breeding "like begets like". We used herd sires that were stacked 4 & 5 generations deep in low birthweight EPDs to bred to cows with similar genetic makeup and with production histories of low actual birthweights. This changed our focus from a strait performance program to product production for specific functions for the commercial cattle industry. In 1987, we applied this same concept to improving the final product composition of our seedstock.

Having a live calf is the first step, the second step is keeping expenses to a minimum. Realizing the two largest expenses in a cattle operation are cow maintenance and bringing replacement females into production, we set up 10 perimeters to guide our selection process.

1. Birth weight EPD
2. Actual birth weights
3. Length of dam's gestation
4. Dam's calving interval
5. Sire's daughters calving intervals
6. Semen quality
7. Milk EPDs
8. Mature size EPD
9. Longevity
10. Biological body type

At Green Garden, our goal is to produce seedstock that will reduce calving difficulties, improve performance, reduce mature cow size, and increase final product value. Below are two graphs depicting how the EPDs of the bulls in our 2002 sale compare with the average non-parent EPDs in the Angus data base.



The Finish: Final Product - The Carcass Connection

If we look at growth EPDs as how quick we produce our product, then we must look at carcass EPDs as the kind of product we produce. At Green Garden it is important to produce the seedstock that will improve the composition of the final product and to improve net profit.

Using body composition EPDs and ultrasound scan data as selection tools, we have been aggressively stacking positive marbling EPDs. In our 43rd Annual Production Sale, 100% of our offering will have positive carcass EPDs or will have been sired by bulls with positive carcass EPDs. Most are stacked several generations deep in positive carcass traits and are designed to:

1. Reduce days on feed
2. Reduce outside fat, reducing kill floor loss due to excessive trim.
3. Improve the consistency and palatability of the final product.
4. Produce a product that meets Certified Angus Beef qualifications or better.

We were fortunate to have been selected by John Brethour, animal scientist and beef research specialist at the KSU Experimental Station in Hays, Kansas, to be part of a comprehensive "start to finish" test comparing Angus sires to the high-marbling Japanese Wagyu breed.

Listed below are the results of the comprehensive "start to finish" test. This trial involved progeny from Gardens Highmark, Gardens Perfection 719, Gardens Bravo, Summitcrest Scotch Cap OB45 (the reference sire), and a proven high marbling Wagyu bull.

	Wagyu	Angus
No. of Head	24	47
Average age of dam	4 yr.	6 yr.
Average % Angus in dam	47.40%	48.70%
Average weaning weight	520	576
Average yearling weight	863	998
Average weight at harvest	1239	1335
Average age at harvest	508	474
Average carcass weight	776	830
Carcass weight per day of age	1.54	1.75
Average marbling score	5.37	6.18
Average backfat, in	0.37	0.46
Average REA, sq in	13.8	14.1

	Wagyu	Angus
Carcass yield grade		
YG1	29.17%	4.26%
YG2	58.33%	46.81%
YG3	12.50%	48.94%
Carcass quality grade		
Prime		12.77%
CAB	50.00%	55.32%
Choice	20.83%	32.00%
Select	29.1%	

For retained ownership or those who feed your cattle, quality grade and yield grade will generate the most premiums for product produced.

Good News at Green Garden

News from the Carcass Contest at Beef Empire Day

Steers sired by Green Garden Bulls place **1st, 10th 11th and 19th** at the Beef Empire Days Carcass Contest in Garden City this summer.

The winner of the Carcass Contest was sired by Gardens Perfection 719, who is currently being used at the Light Ranch, in Turpin, OK. His live weight was 1244, with a ribeye area of 14.8, a marbling score of 7.0 with .36 inches of backfat. He was a yield grade 1.97 and graded high choice (CAB).

These steers were selected from a group of steers being used in an ongoing carcass comparison study being done at the KSU Agricultural Research Center, in Hays, KS involving genetics from Green Garden Angus. This study is being done using a mixed breed cowherd that averaged about 50% Angus while the rest were predominately Simmental and a little Brahman. Results of this test are on pages 1 and 12 of this catalog. A more detailed analysis of this data can be seen on our web site.

The genetics that have been developed at Green Garden have the ability to move most cowherds into significant premiums over market price when fed properly and marketed on any of the grids available.

Gardens Edge, LOT 1, an outstanding fall yearling son of SS Traveler 6807 T510, continues to develop into an exciting young prospect with an actual BW of 72 lbs., a weaning weight of 692, ratio 120, and yearling weight of 1151, ratio 113.

The Edge's	EPD's	%Breakdown
BW	+ .6	top 7%
Weaning	+ 44	top 5%
Milk	+ 18	top 45%
Yearling	+ 78	top 10%
Scrotal	+ .44	top 37%
% IMF	+ .31	top 2%
RE	+ .15	top 27%

We collected the Edge at 13 months of age and currently have semen available.

The Edge's Dam, Green Garden Sophie 8263, is a super daughter of Gardens Opto (the sire of the Grand Champion Carcass Steer at the 2001 National Junior Heifer Show) Sophie scanned a 4.69 with an IMF ratio of 119, and a ribeye ratio of 102, putting her in the top 10% of the breed for %IMF.

The Edge's Granddam, Green Garden Sophie 2256, a daughter of Summitcrest Perfection, was the highest scanning heifer in her calf crop, and carries a marbling EPD of +.25 and a REA of +.39. Sophie 2256 is a pathfinder cow with 6 weanings at 109 and 5 yearlings at 104.

Good News from those feeding on the grid.

Norman Kanak, Bluestem Cattle Company, Grant City, Mo. called the other day to tell us that his 1st generation Green Garden Bulls had changed his percentage choice from 40% to 90.8% with a premium of \$24.30 per head over market price.

Ron & Bretta Robison from Alma, Nebraska, sent their latest data down with progeny out of Green Garden Bulls. This set of calves went 11% Prime, 60% CAB, 83% Choice and 5% Select. They made an average premium of \$46.95 per head.

Congratulations to the folks at Summitcrest with an all-time-high-selling bull in their 2001 Fall Production Sale. One-Third semen interest sold for \$90,000 on Summitcrest High Prime. His sire is Gardens Prime Time.

Good News in the 2002 Angus Sire Summary



*Gardens Expedition, owned by Stevenson\Basin and Green Garden, has some exciting numbers with his birth EPD of +2.2, weaning +39, yearling +97. He ranks in the top 1% of the breed for %IMF at +.39, and in the top 1% for growth. Thirty-five sons of Expedition recently sold in the Stevenson\Basin Fall 2001 Sale for an average of \$3507. Note: Expedition is the only bull in the Spring 2002 Sire Summary that ranks in the top 1% for both Percent IMF and Yearling growth.

* In the structured summary, SC OB45, owned by Summitcrest Farms and Green Garden, is the #1 sire for marbling at +.72, and the #2 sire for %IMF at +.58.

* N Bar Prime Time D806 is the #3 sire for % IMF at +.58. His sire, Gardens Prime Time, ranks in the top 7% of the breed for %IMF.

* Gardens Highmark ranks in the top 1% of the breed for %IMF with a +.41 EPD.

* Gardens Bravo ranks in the top 2% of the breed for %IMF at +.27, the top 6% for Ribeye area at +.39, and the top 15% for retail product at +.45.

* Gardens Bravo A37, an exciting young sire at Green Garden, ranks in the top 1% of the breed for %IMF at +.48, with a Ribeye Area EPD of +.22.

* Gardens Martix, sire SS Traveler 6807 T510\dam by OB45, ranks in the top 1% of the breed for %IMF at +.39, with a RE of +.25, and %RP of +.29. Several females sell bred to him.



Congratulations to Brandon New, pictured on the left with his Grand Champion Carcass Steer at the 2001 National Jr. Heifer Show in Denver this summer. His 1st place steer weighed 1193, with .20 backfat, had a 13.1 ribeye, **a yield grade of 1.77 and a quality grade of Prime (SLAB 10)**. Brandon's 2nd entry weighed 1167, had a 12.3 ribeye, with .2 backfat and a yield grade 2.04 and graded average choice (MT 30) and stood 10th overall. Both steers were sired by **Gardens Opto**.

Ref. Sire **N Bar Emulation EXT**
A 2/1/86 10776479 Tattoo: U23

Birth	Wean	Milk	Year	Yr Ht	Mwt	Mht	Scrotal	IMF	REA	Fat	% RP
+2.0	+43	+21	+81	+2	-8	+5	-.48	+.08	+.37	+.043	-.07
.99	.99	.99	.99	.99	.97	.98	.99	.94	.94	.95	.94



#Pathfinder Jointly owned with N Bar Ranch, Grass Range, Montana.

#Emulation 31
 #Emulation N Bar 5522 10095639
 N Bar Primrose 2424 10474919
 #Emulation 31
 Ankony 8F78 Lass 8F275
 Primrose N Bar 9962
 # FCR Elation Lad 652 Miss Emulous 243
 # Ankonian Dynamo 27542 AnkonyB999 Lass 26832
 FCR Elation Lad 652 Miss Emulous 243
 Lad 118K of JRS N Bar Primrose 5329

Fifteen years and counting, Ext continues to have a major influence on our farm and throughout the world. For calving ease, rapid early growth, moderate mature size and superb females, there is no equal.

Semen available through ABS

Ref. Sire **Gardens Prime Time**
B 2/8/93 12007667 Tattoo: 3246

Birth	Wean	Milk	Year	Yr Ht	Mwt	Mht	Scrotal	IMF	REA	Fat	% RP
+4	+27	+23	+69	+2	-55	+3	+.97	+.16	+.03	+.010	+.02
.99	.99	.98	.99	.99	.67	.77	.99	.91	.91	.92	.91



#Pathfinder Jointly owned with Summitcrest Farms, Summitville, Ohio.

#Q A S Traveler 23-4
 # R R Traveler 5204 10705768
 Eriskay of Rollin Rock 3302
 Gardens Transition 7205 S1
 #Green Garden Susie 1246 S1 11652677
 Green Garden Susie 9118 S2
 # Band 234 of Ideal 3163
 Q A S Blackbird Eve 601 1
 Shoshone Vantage JB23
 Eriskay of Rollin Rock 7003
 # Traveler 1148 G D A R
 N Bar Clova Pride 2264
 #V D A R Power Play 91
 Green Garden Susie B 3117 C

Prime Time continues to be an excellent calving ease and carcass sire. A son of Prime Time caused some excitement when 1/3 semen interest was sold for \$90,000 at the Summitcrest Female Sale last fall. His daughters are among our best young cows, moderate in size, with excellent utters. Prime Time's dam, Green Garden Susie is currently one the leading donor cows at the Whitestone Farm in Virginia.

Semen available through Accelerated Genetics

Ref. Sire **Gardens EXT 4137**
C 2/28/94 12166857 Tattoo: 4137

Birth	Wean	Milk	Year	Yr Ht	Mwt	Mht	Scrotal	IMF	REA	Fat	% RP
+1.8	+37	+21	+73	+0	+2	+5	+1.06	+.10	+.04	+.010	-.13
.99	.98	.90	.95	.95	.29	.31	.99	.77	.77	.80	.77



#Pathfinder Jointly owned with Benoit Farm, Ebson, Kansas.

#Emulation N Bar 5522
 # N Bar Emulation EXT 10776479
 N Bar Primrose 2424
 #Lemmon Impact
 #Green Garden Bonnie 1134 S1 11652661
 #Green Garden Bonnie 930 S1
 # Emulation 31
 Ankony 8F78 Lass 8F275
 # Emulation 31
 Primrose N Bar 9962
 # Black Witch Corbinaire 95
 # Lemmon Elga 3020
 #S S Rito 0715 OH3
 Green Garden Bonnie 7133 C

4137 is clearly one of the most outstanding sons of EXT in the country. A popular sire both at Green Garden and Benoit Angus Farms. Green Garden Bonnie, 4137's dam, is currently a member of the elite donor cows at Whitestone Farm in Virginia. His daughters are doing a splendid job.

Semen available through ABS

Ref. Sire **SS Traveler 6807 T510**
D 4/16/95 12502030 T510

Birth	Wean	Milk	Year	Yr Ht	Mwt	Mht	Scrotal	IMF	REA	Fat	% RP
-2.1	+32	+16	+71	+5	+42	+1.1	+.05	+.49	+.06	-.001	+.05
.98	.97	.84	.94	.80	.30	.30	.99	.78	.78	.981	.78



#Pathfinder

#Q A S Traveler 23-4
 #DHD Traveler 6807 10858958
 #Bemindful Maid DHD 0807
 #Hoff Hi Spade SC 491
 #SS Miss Hi Spade A114 11665432
 SS Miss Rito OH3 5H9
 #Band 234 of Ideal 3163
 Q A S Blackbird Eve 601 1
 #PBC 707 1M F0203
 Bemindful Maid of RR 1079
 #R&J Spade 1204 +
 #Hoff Miss Scotch Cap 074
 #SS Rito 0715 OH3
 #SS Miss Rito 119 8R9

An Exciting new sire being used at Green Garden that excels in calving ease - growth - and carcass. T510 ranks in the top 1% of the breed for Percent IMF. For overall calving ease, growth and marbling there is none better. We are extremely pleased with the overall body type of his calves.

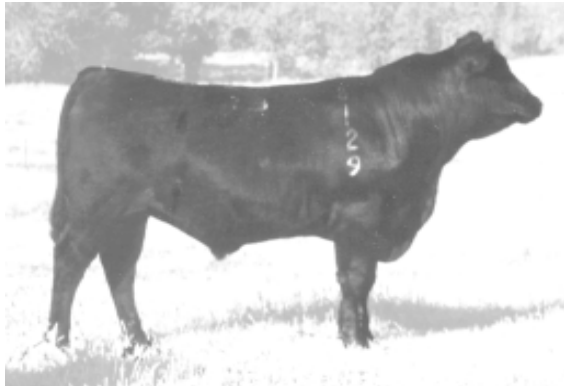
Ref. Sire **Gardens Highmark**

E

1/25/98 13047487 Tattoo: 8129

EPD
ACC

Birth	Wean	Milk	Year	Yr Ht	Mwt	Mht	Scrotal	IMF	REA	Fat	% RP
+2.6	+33	+19	+70	+.7	NA	NA	+46	+.41	+.17	+.014	+.01
.91	.87	.57	.81	.91	NA	NA	.64	.59	.59	.64	.59



#Pathfinder
Summitcrest Scotch Cap 0B45 11847053
Green Garden Pride 6128 S1 12555922

#Scotch Cap
#Summitcrest Heiress 0T09
#N Bar Emulation EXT
Green Garden Pride 4128 S1

#P S Power Play
Hoff Band 07 of S C 509
Premier Independence K N
Summitcrest Heiress 0R01
Emulation N Bar 5522
N Bar Primrose 2424
Gardens Transition 7205 S1
Green Garden Pride 9128 S1

Gardens Highmark presently ranks in the top 1% of the breed for %IMF (marbling). He has well balanced EPD's across the board. We are well pleased with his first daughters that are coming into production, they are easy fleshing with very good udders. Highmark has the highest ultrasound measurement that we have ever scanned (a modest 80), with .12 of a inch of backfat and a 13.4 square inch ribeye. A very prolific semen producer.

Semen Available

Ref. Sire **Gardens Bravo**

F

2/18/98 13084451 Tattoo: 8225

EPD
ACC

Birth	Wean	Milk	Year	Yr Ht	Mwt	Mht	Scrotal	IMF	REA	Fat	% RP
+2.9	+25	+17	+58	+.3	+2	+1.0	-.05	+.27	+.39	+0	+.45
.87	.81	.58	.74	.97	.14	.14	.54	.45	.45	.51	.45



#Pathfinder
G T Expo 11160688
Green Garden Beau 6220 S2 12555938

#Scotch Cap
#GT Pine Siskin
Gardens Extender
Green Garden Beau 1149 S2

#P S Power Play
Hoff Band 07 of S C 509
Pine Drive Big Sky
#GT Pioneer Shoshone
N Bar Emulation EXT
Summitcrest Estelle Y115
#Scotch Cap
Skyland BB Miss 114

Bravo ranks in the top 2% of the breed for IMF, the top 7% of the breed for REA, and the top 15% for %Retail Product. Bravo is a frame score 5 bull that will reduce mature size, while adding muscle and marbling, and percent retail product. His first daughters look very promising, with excellent udders and great dispositions.

Semen Available

Ref. Sire **Gardens Matrix**

G

08/22/00 13818774 Tattoo: A47

EPD
ACC

Birth	Wean	Milk	Year	Yr Ht	Mwt	Mht	Scrotal	IMF	REA	Fat	% RP
-0.2	+30	+19	+66	+.3	NA	NA	+.27	+.39	+.25	-.002	+.29
.34	.34	.27	.28	.37	NA	NA	.31	.37	.37	.38	.37



#Pathfinder
S S Traveler 6807 T510 12502030
Green Garden Protet 846 S1 13167878

#D H D Traveler 6807
#S S Miss Hi Spade A11
Summitcrest Scotch Cap 0B45
Green Garden Protet 444 S1

#Q A S Traveler 23-4
#Bemindful Maid D H D 0807
#Hoff Hi Spade S C 491
S S Miss Rito 0H3 5H9
#Scotch Cap
#Summitcrest Heiress 0T09
Gardens Transition 7205 S1
Green Garden Protet 0245 S1

Gardens Matrix is an outstanding SS Traveler T510 son that we have chosen to use this year. Matrix pulls together outstanding production numbers along with ranking in the top 1% for %IMF, the top 15% for REA, and the top 15% for Retail Product. His lineage contains some of the best moderately framed, easy fleshing females at Green Garden.

Semen Available

Ref. Sire **Gardens Expedition**

H

09/02/96 12689078 Tattoo: 6269

EPD
ACC

Birth	Wean	Milk	Year	Yr Ht	Mwt	Mht	Scrotal	IMF	REA	Fat	% RP
+2.2	+39	+16	+97	+.5	+0	+.5	+.12	+.35	+.07	+.049	-.56
.97	.93	.71	.92	.74	.30	.31	.82	.73	.73	.73	.37



#Pathfinder
Owned with Stevenson/Basin Angus Ranch, Hobson MT.
#N Bar Emulation EXT 10776479
N Bar Primrose 2424
Gardens Transition 7205 S1
Green Garden Gina 2268 S2 11918633
Green Garden Gina 0261 S2

Emulation 31
Ankony 8F78 Lass 8F275
Emulation 31
Primrose N Bar 9962
Traveler 1148 G D A R
N Bar Clova Pride 2264
Rambo 465T of J R S
B A F Georgina Excel 1611

Gardens Expedition has some exciting numbers and is the only bull in the Spring 2002 Sire Summary that ranks in the top 1% for Percent IMF and the top 1% for Yearling growth. Thirty-five sons of Expedition sold in the Stevenson\Basin Fall 2001 Sale for an average of \$3507. We recently sold Expeditions Dam to Baldrige Bros. and the Southern Land and Cattle Company for use in their embryo program.

Semen Available

Ref. Sire

I

**Summitcrest
Scotch Cap OB45**

2/9/92 11847053 Tattoo: OB45

EPD
ACC

Birth	Wean	Milk	Year	Yr Ht	Mwt	Mht	Scrotal	IMF	REA	Fat	% RP
+2.6	+25	+24	+55	+7	+27	+1.0	+55	+59	+05	+007	+11
.98	.98	.91	.95	.98	.30	.31	.99	.76	.76	.80	.76

OB45 is the #1 bull for marbling (+.72) in the spring 2002 Structured Sire Summary, and is listed as the #2 bull for %IMF in the 2002 Spring Ultrasound Carcass Evaluation Report. His daughters are among the best young females at Green Garden. He is a record setting sire in Australia as well as being the leading sire group at most production sales.

Semen Available

#Pathfinder Jointly owned with Summitcrest Farms, Summitville, Ohio.
 #P S Power Play # Early Sunset Emulous 60E
 #Scotch Cap 10226429 #Hoff Band O7 of S C 509 P S Menteith Blanche 205
 #Premier Independence K N #Ken Caryl Mr Angus 8017
 #Summitcrest Heiress OT09 Freestate Barbara 871 of Kaf
 10700663 Summitcrest Heiress 0R01 #Pine Drive Big Sky
 Summitcrest Heiress 0M71

Ref. Sire

J

Summitcrest Perfection

3/14/90 11434055 Tattoo: Z230

EPD
ACC

Birth	Wean	Milk	Year	Yr Ht	Mwt	Mht	Scrotal	IMF	REA	Fat	% RP
+5.3	+37	+28	+66	+1.5	+2	+1.3	+74	+14	+54	+021	+80
.97	.94	.88	.93	.97	.56	.66	.86	.55	.55	.61	.55

Perfection is the #2 bull for marbling (+.71) in the Spring 2002 Structured Sire Summary. His ribeye area EPD of .54 ranks his in the top 1% of the breed, %RP in the top 3%, his Scrotal in the top 6%. Clearly one of a kind for total carcass traits.

Limited Semen Available

#Pathfinder Jointly owned with Summitcrest Farms, Summitville, Ohio.
 #P S Power Play # Early Sunset Emulous 60E
 #Scotch Cap 10226429 #Hoff Band O7 of S C 509 P S Menteith Blanche 205
 #Premier Independence K N #Ken Caryl Mr Angus 8017
 Summitcrest Mamie T009 Freestate Barbara 871 of Kaf
 10683192 R&J Duchess 1239 Premier Jackpot
 Albern Duchess 5 73

Ref. Sire

K

Gardens Opto 6071

03/13/96 12555908 Tattoo: 6071

EPD
ACC

Birth	Wean	Milk	Year	Yr Ht	Mwt	Mht	Scrotal	IMF	REA	Fat	% RP
+1.9	+35	+11	+55	+2	-10	+5	+17	+15	-.08	+030	-.41
.93	.86	.69	.87	.93	.21	.23	.65	.63	.63	.68	.63

Gardens Opto is sire of the Grand Champion YG1 Prime Carcass steer at the 2001 National Junior Heifer Show in Denver. Opto ranks in the top 10% of the breed for %IMF. Several daughters sired by Opto will be selling in the sale. One of the best dispositioned bulls at Green Garden.

Semen Available

#Pathfinder #N Bar Emulation EXT #Emulation N Bar 5522
 Gardens Extender 12160396 Summicrest Estelle Y115 N Bar Primrose 2424
 #Premier Independence K N
 #Summitcrest Estelle U011
 #Pine Drive Big Sky
 #S A Direct Drive 83 Prim Lassie S A 440
 Green Garden Rita 227 S2 #Band 234 of Ideal 3163
 11919490 #War Rito 9027 5105 7007 #W A R Rito 7007 4491 57

Ref. Sire

L

**Gardens
Transition 7205 S1**

09/12/87 11128214 Tattoo:7205-B8

EPD
ACC

Birth	Wean	Milk	Year	Yr Ht	Mwt	Mht	Scrotal	IMF	REA	Fat	% RP
+2	+26	+14	+56	+0	+7	+4	+79	-.14	+12	-.012	+32
.99	.99	.98	.98	.99	.90	.94	.99	.53	.53	.58	.53

One of the great calving ease - maternal sires at Green Garden. His daughters are moderate mature size, easy fleshing and very attractive. Two of his daughters, Green Garden Susie (Prime Times dam) and Green Garden Gina (Expeditions dam) are leading donor cows at Whitestone Farm in Virginia, and Baldrige Bros. and Nebraska. Several daughters sell.

Limited Semen Available

#Pathfinder #Q A S Traveler 23-4 #Band 234 of Ideal 3163
 #Traveler 1148 G D A R Q A S Blackbird Eve 601 1
 9995320 #Blackcap Forever 485 GDAR #Candolier Forever 376
 #Ankonian Dynamo Blackcap 214 G D A R
 N Bar Clova Pride 2264 Miss Emulous B
 10474903 Clova Pride N Bar 7352 Happyvale 1356 N Bar 2790
 N Bar Clova Pride 2907

Ref. Sire

M

Gardens Bravo A37 S1

04/16/00 13604392 Tattoo A37

EPD
ACC

Birth	Wean	Milk	Year	Yr Ht	Mwt	Mht	Scrotal	IMF	REA	Fat	% RP
+1.6	+30	+16	+60	+4	NA	NA	+10	+48	+22	+022	+03
.34	.31	.23	.23	.43	.97	.98	.40	.36	.36	.38	.36

Gardens Bravo A37 scanned a 6.34 on the CUPP with .15 inches of backfat. The top score in his calf crop. His dam is a pathfinder daughter of Gardens Transition from the Susie cow family that produced Gardens Prime Time. A37 is probably one of the best phenotypically made bulls we have ever produced. He carries balanced EPDs from start to finish with great carcass potential.

Semen Available

#Pathfinder #G T Expo #Scotch Cap
 Gardens Bravo 13084451 Green Garden Beau 6220 S2 #GT Pine Siskin
 Gardens Transition 7205 S1 Gardens Extender
 #Green Garden Susie 437 S1 Green Garden Susie 9217 S1 Green Garden Beau 1149 S2
 12166891 N Bar Clova Pride 2264
 #Emulation N Bar 5522
 Green Garden Susie 7117C

Ref. Sire

N

**Gardens
OB45 9254 S1**

9/03/99 13456463 Tattoo: 9254

EPD
ACC

Birth	Wean	Milk	Year	Yr Ht	Mwt	Mht	Scrotal	IMF	REA	Fat	% RP
+0.1	+26	+16	+63	+5	NA	NA	+42	+29	+04	+004	+06
.36	.36	.32	.30	.42	NA	NA	.31	.07	.07	.07	.07

An excellent young calving ease, carcass bull that we are sampling. His %IMF of +.29 ranks him in the top 1 1/2% of the breed. A very attractive and structurally sound young sire. We are looking forward to scanning his first progeny.

Semen Available

#Pathfinder #Scotch Cap #P S Power Play
 Summitcrest Scotch Cap OB45 #Hoff Bad O7 of S C 509
 11847053 #Summitcrest Heiress OT09 #Premier Independence K
 Gardens Transition 7205 S1 Summitcrest Heiress 0R01
 Green Garden Ella 5259 S2 #Traveler 1148 G D A R
 12469020 Green Garden Ella 2258 S2 N Bar Clova Pride 2264
 #N Bar Eulation EXT
 Green Garden Ella 9255 S



Gardens SST A69 S1

Lots 13 - 17 and lots 60 and 61 are transplant calves out of our Lucy 760 cow. Lucy 760 was chosen for transplant because she exhibits an idea biological body type of easy fleshing with moderate mature size while scanning a modest 0 (6.0) with .08 inches of backfat.

13 Gardens SST A69 S1 (ET)

09/09/00 Bull		13853374		A69					
Birth	Wean	Milk	Year	Scrotal	IMF	Rea	Fat	%RP	
EPD	-1.0	+27	+17	+60	+18	+23	+23	-0.009	+ .290
#Pathfinder									
#D H D Traveler 6807			#Q A S Traveler 23-4			#Bemindful Maid D H D 0807			
S S Traveler 6807 T510			#Hoff Hi Spade S C 491			S S Miss Rito 0H3 5H9			
12502030			#S S Miss Hi Spade A114			#Scotch Cap			
#G T Expo			#GT Pine Siskin			Gardens Transition 7205 S1			
Green Garden Lucy 760 S1			Green Garden Lucy 475 S2			Green Garden Lucy 12 S1			
12911450									

Birth	79	Wean	551	Rat:	100	Year	1053	Rat:	100
Adj. Ht.	50.4	Adj. SC	37.0	Dam's PR:	12	WR	102	12 YR	101
		Age 4	Wt.		1200				

14 Gardens SST AB10 S2 (ET)

09/18/00 Bull		13853376		AB10					
Birth	Wean	Milk	Year	Scrotal	IMF	Rea	Fat	%RP	
EPD	-1.0	+27	+17	+60	+18	+30	+25	-0.007	+ .290
#Pathfinder									
Birth 90			Wean 603			Rat: 100		Year 1037	
			Rat: 100						
Adj. Ht.	50.1	Adj. SC	36.0	Dam's PR:	12	WR	102	12 YR	101
		Age 4	Wt.		1200				

15 Gardens SST A022 S1 (ET)

09/22/00 Bull		13853369		A022					
Birth	Wean	Milk	Year	Scrotal	IMF	Rea	Fat	%RP	
EPD	-1.0	+27	+17	+60	+18	+30	+06	+0.001	+0.080
#Pathfinder									
Birth 76			Wean 574			Rat: 100		Year 958	
			Rat: 100						
Adj. Ht.	49.0	Adj. SC	36.0	Dam's PR:	12	WR	102	12 YR	101
		Age 4	Wt.		1200				

16 Gardens SST A93 S1 (ET)

09/14/00 Bull		13853375		A93					
Birth	Wean	Milk	Year	Scrotal	IMF	Rea	Fat	%RP	
EPD	-1.0	+27	+17	+60	+18	+26	+18	+0.007	+1.120
#Pathfinder									
Birth 72			Wean 519			Rat: 100		Year 1021	
			Rat: 100						
Adj. Ht.	50.0	Adj. SC	36.0	Dam's PR:	12	WR	102	12 YR	101
		Age 4	Wt.		1200				

17 Gardens SST A62 S1 (760's natural calf)

10/15/00 Bull		13831254		A62					
Birth	Wean	Milk	Year	Scrotal	IMF	Rea	Fat	%RP	
EPD	-1.0	+28	+16	+61	-05	+25	+24	-0.012	+0.330
#Pathfinder									
Birth 71			Wean 564			Rat: 102		Year 1012	
			Rat: 102						
Adj. Ht.	50.3	Adj. SC	35.7	Dam's PR:	12	WR	102	12 YR	101
		Age 4	Wt.		1200				

18 Gardens SST A151 S1

09/12/00 Bull		13853374		A151					
Birth	Wean	Milk	Year	Scrotal	IMF	Rea	Fat	%RP	
EPD	-0.9	+26	+17	+57	-0.49	+0.21	+0.07	-0.001	+0.120
#Pathfinder									
#D H D Traveler 6807			#Q A S Traveler 23-4			#Bemindful Maid D H D 0807			
S S Traveler 6807 T510			#Hoff Hi Spade S C 491			S S Miss Rito 0H3 5H9			
12502030			#S S Miss Hi Spade A114			#Scotch Cap			
#G T Expo			#GT Pine Siskin			Gardens Director			
Green Garden Blackcap 7155 S1			Green Garden Blackcap 4156			Green Garden Blackcap 9156			
12910063									

Birth	73	Wean	552	Rat:	96	Year	1006	Rat:	99
Adj. Ht.	49.4	Adj. SC	35.2	Dam's PR:	2	WR	102	2 YR	100
		Age 4	Wt.		975				

19 Gardens SST A66 S1

09/17/00 Bull		13818781		A66					
Birth	Wean	Milk	Year	Scrotal	IMF	Rea	Fat	%RP	
EPD	-0.8	+31	+15	+56	-0.26	+0.21	+0.0	-0.006	-0.090
#Pathfinder									
#D H D Traveler 6807			#Q A S Traveler 23-4			#Bemindful Maid D H D 0807			
S S Traveler 6807 T510			#Hoff Hi Spade S C 491			S S Miss Rito 0H3 5H9			
12502030			#S S Miss Hi Spade A114			#N Bar Emulation EXT			
Gardens Extender			Summitcrest Estelle Y115			Gardens Band 1015 S1			
Green Garden Barbie 506 S1			Green Garden Barbie 366 S1			Green Garden Barbie 765			
12469279									

Birth	73	Wean	563	Rat:	101	Year	907	Rat:	91
Adj. Ht.	49.1	Adj. SC	35.4	Dam's PR:	3	WR	106	3 YR	103
		Age 6	Wt.		1060				

20 Gardens SST A85 S1

09/10/00 Bull		13818785		A85					
Birth	Wean	Milk	Year	Scrotal	IMF	Rea	Fat	%RP	
EPD	-0.8	+25	+15	+55	-0.37	+0.18	+0.20	-0.005	-0.180
#Pathfinder									
#D H D Traveler 6807			#Q A S Traveler 23-4			#Bemindful Maid D H D 0807			
S S Traveler 6807 T510			#Hoff Hi Spade S C 491			S S Miss Rito 0H3 5H9			
12502030			#S S Miss Hi Spade A114			#Scotch Cap			
#G T Expo			#GT Pine Siskin			Gardens Band 91 S1			
Green Garden Poppy 785 S1			Green Garden Poppy109 S1			Green Garden Poppy 1948			
12911452									

Birth	68	Wean	514	Rat:	93	Year	965	Rat:	97
Adj. Ht.	49.9	Adj. SC	36.2	Dam's PR:	2	WR	96	2 YR	98
		Age 4	Wt.		1180				

21 Gardens SST A16 S1

08/30/00 Bull		13818743		A16					
Birth	Wean	Milk	Year	Scrotal	IMF	Rea	Fat	%RP	
EPD	-0.4	+30	+17	+65	-0.16	+0.23	+0.01	-0.004	+0.060
#Pathfinder									
#D H D Traveler 6807			#Q A S Traveler 23-4			#Bemindful Maid D H D 0807			
S S Traveler 6807 T510			#Hoff Hi Spade S C 491			S S Miss Rito 0H3 5H9			
12502030			#S S Miss Hi Spade A114			#N Bar Emulation EXT			
Gardens EXT 4137 S2			#Green Garden Bonnie 11			Gardens Director			
Green Garden Blkbd 717 S1			Green Garden Blkbd 416 S1			Blackbird of Valley 19			
12910012									

Birth	70	Wean	569	Rat:	99	Year	1033	Rat:	102
Adj. Ht.	49.2	Adj. SC	37.0	Dam's PR:	2	WR	102	2 YR	99
		Age 4	Wt.		1135				

22**Gardens SST A162 S1**

		08/30/00 Bull			13818745			A162		
EPD	Birth	Wean	Milk	Year	Scrotal	IMF	Rea	Fat	%RP	
	-1.6	+26	+19	+60	+0.2	+0.28	.25	-0.008	-0.050	
#Pathfinder										
#D H D Traveler 6807					#Q A S Traveler 23-4					
S S Traveler 6807 T510					#Bernindful Maid D H D 0807					
12502030 #S S Miss Hi Spade A114					#Hoff Hi Spade S C 491					
					S S Miss Rito 0H3 5H9					
#G T Expo					#Scotch Cap					
Green Garden Lady 7161 S1					#GT Pine Siskin					
12911457 #Green Garden Lady 4160 S1					#N Bar Emulation EXT					
					Green Garden Lady 1160					

Birth 57	Wean 517	Rat: 90	Year 962	Rat: 95
Adj. Ht. 49.1	Adj. SC 35.8	Dam's PR: 3	WR 95	2 YR 101
		Age 4	Wt. 1120	

**Gardens Highmark A70 S2****23****Gardens Highmark A70 S2**

		09/23/00 Bull			13818784			A70		
EPD	Birth	Wean	Milk	Year	Scrotal	IMF	Rea	Fat	%RP	
	+1.8	+34	+15	+78	+0.81	+0.29	+0.18	+0.013	-0.130	
#Pathfinder										
Summitcrest Scotch Cap OB45					#Scotch Cap					
Gardens Highmark					#Summitcrest Heiress 0T09					
13047487 Green Garden Pride 6128 S1					#N Bar Emulation EXT					
					Green Garden Pride 4128					
#N Bar Emulation EXT					#Emulation N Bar 5522					
Green Garden Pride 473 S1					N Bar Primrose 2424					
12166902 Green Garden Pride 074 S1					#Schurrtop Fortune 3261					
					Green Garden Pride 776					

Birth 85	Wean 554	Rat: 96	Year 1165	Rat: 115
Adj. Ht. 50.2	Adj. SC 41.0	Dam's PR: 5	WR 99	5 YR 100
		Age 7	Wt. 1190	

24**Gardens Highmark A215 S2**

		10/20/00 Bull			13831255			A215		
EPD	Birth	Wean	Milk	Year	Scrotal	IMF	Rea	Fat	%RP	
	+4.7	+33	+21	+64	+0.43	+0.10	+0.33	+0.012	+0.140	
#Pathfinder										
Summitcrest Scotch Cao OB45					#Scotch Cap					
Gardens Highmark					#Summitcrest Heiress 0T09					
13047487 Green Garden Pride 6128 S1					N Bar Emulation EXT					
					Green Garden Pride 4128					
Summitcrest Perfection					#Scotch Cap					
Green Garden Jilt 712 S2					Summitcrest Mamie T009					
12910010 Green Garden Jilt 413 S1					Gardens Transition 7205					
					Green Garden Jilt 911 S1					

Birth 88	Wean 571	Rat: 103	Year 1041	Rat: 105
Adj. Ht. 49.9	Adj. SC 37.0	Dam's PR: 2	WR 105	2 YR 100
		Age 4	Wt. 1190	

25**Gardens Highmark A131 S2**

		10/12/00 Bull			13818736			A131		
EPD	Birth	Wean	Milk	Year	Scrotal	IMF	Rea	Fat	%RP	
	+2.5	+28	+20	+59	-0.01	+0.23	+0.01	+0.015	-0.120	
#Pathfinder										
Summitcrest Scotch Cap OB45					#Scotch Cap					
Gardens Highmark					#Summitcrest Heiress 0T09					
13047487 Green Garden Pride 6128 S1					#N Bar Emulation EXT					
					Green Garden Pride 4128					
#G T Expo					#Scotch Cap					
Green Garden Bonnie 9130 S1					#GT Pine Siskin					
13084448 Green Garden Bonnie6135 S1					#N Bar Emulation EXT					
					#Green Garden Bonnie 013					

Birth 84	Wean 575	Rat: 100	Year 981	Rat: 97
Adj. Ht. 49.7	Adj. SC 35.8	Dam's PR: 1	WR 100	1 YR 97
		Age 3	Wt. 1130	

26**Gardens Highmark A158 S1**

		10/24/00 Bull			13818741			A158		
EPD	Birth	Wean	Milk	Year	Scrotal	IMF	Rea	Fat	%RP	
	+0.8	+28	+18	+63	+0.53	+0.26	+0.22	+0.008	+0.090	
#Pathfinder										
Summitcrest Scotch Cap OB45					#Scotch Cap					
Gardens Highmark					#Summitcrest Heiress 0T09					
13047487 Green Garden Pride 6128 S1					N Bar Emulation EXT					
					Green Garden Pride 4128					
Gardens Prime Time					#R R Traveler 5204					
Green Garden Blackcap 6155 S1					#Green Garden Susie 124					
12689062 Green Garden Blackcap 4128					Gardens Director					
					Green Garden Blackcap 9					

Birth 78	Wean 543	Rat: 94	Year 1012	Rat: 100
Adj. Ht. 49.5	Adj. SC 38.0	Dam's PR: 3	WR 97	3 YR 103
		Age 5	Wt. 1060	

27**Gardens Highmark A49 S1**

		10/09/00 Bull			13818776			A49		
EPD	Birth	Wean	Milk	Year	Scrotal	IMF	Rea	Fat	%RP	
	+1.4	+29	+15	+59	-0.07	+0.31	+0.0	+0.015	-0.120	
#Pathfinder										
Summitcrest Scotch Cap OB45					#Scotch Cap					
Gardens Highmark					#Summitcrest Heiress 0T09					
13047487 Green Garden Pride 6128 S1					N Bar Emulation EXT					
					Green Garden Pride 4128					
Gardens Transition 7204					#Traveler 1148 G D A R					
Green Garden Ellie 645 S1					N Bar Clova Pride 2264					
12555956 Green Garden Pridelia 9206 S1					#Emulation N Bar 5522					
					Green Garden Pridelia 66					

Birth 76	Wean 522	Rat: 94	Year 988	Rat: 99
Adj. Ht. 49.6	Adj. SC 35.7	Dam's PR: 3	WR 94	13 YR 97
		Age 5	Wt. 1240	

28**Gardens Highmark A248 S1**

		09/25/00 Bull			13818756			A248		
EPD	Birth	Wean	Milk	Year	Scrotal	IMF	Rea	Fat	%RP	
	+1.1	+31	+16	+60	-0.07	+0.37	+0.0	+0.001	-0.120	
#Pathfinder										
Summitcrest Scotch Cap OB45					#Scotch Cap					
Gardens Highmark					#Summitcrest Heiress 0T09					
13047487 Green Garden Pride 6127 S1					N Bar Emulation EXT					
					Green Garden Pride 4128					
#N Bar Emulation EXT					#Emulation N Bar 5522					
Green Garden Pridelia 7247 S2					N Bar Primrose 2424					
12784449 Green Garden Pridelia 9249 S2					#Schurrtop Fortune 3261					
					Green Garden Pridelia 14					

Birth 76	Wean 540	Rat: 94	Year 951	Rat: 94
Adj. Ht. 49.8	Adj. SC 35.5	Dam's PR: 3	WR 101	3 YR 102
		Age 4	Wt. 1170	

29**Gardens Highmark A42 S1**

		10/30/00 Bull			13818771		A42		
EPD	Birth	Wean	Milk	Year	Scrotal	IMF	Rea	Fat	%RP
	+1.5	+33	+18	+69	+65	+28	+01	-001	-010
#Pathfinder									
Gardens Highmark 13047487				Summitcrest Scotch Cap OB45 Green Garden Pride 6128 S1			#Scotch Cap #Summitcrest Heiress OT09 N Bar Emulation EXT Green Garden Pride 4128 #R R Traveler 5204		
Green Garden Eulaine 641 S1 12555955				Gardens Prime Time Green Garden Eulaine 0241 S1			#Green Garden Susie 1246 Gardens Transition 7205 S1 #Green Garden Eulaine 89		

Birth 76	Wean 572	Rat: 99	Year 988	Rat: 97
Adj. Ht. 49.2	Adj. SC 38.0	Dam's PR: 2	WR 105	2 YR 101 Age 5 Wt. 1210

**Gardens Prime Time A159 S2****30****Gardens Highmark A31 S1**

		09/28/00 Bull			13818767		A31		
EPD	Birth	Wean	Milk	Year	Scrotal	IMF	Rea	Fat	%RP
	+2.1	+28	+12	+59	+57	+10	+27	+002	+230
#Pathfinder									
Gardens Highmark 13047487				Summitcrest Scotch Cap OB45 Green Garden Pride 6128 S1			#Scotch Cap #Summitcrest Heiress OT09 N Bar Emulation EXT Green Garden Pride 4128 #Traveler 1148 G D A R		
Green Garden Lucy 402 S1 12215545				Gardens Transition 7204 S1 Green Garden Lucy 92 S2			N Bar Clova Pride 2264 #Schurrtop Fortune 3261 V V R Lucy KECA29		

Birth 82	Wean 506	Rat: 91	Year 1007	Rat: 101
Adj. Ht. 49.3	Adj. SC 39.0	Dam's PR: 3	WR 97	3 YR 100 Age 7 Wt. 1230

33**Gardens Prime Time A159 S2**

		10/01/00 Bull			13818742		A159		
EPD	Birth	Wean	Milk	Year	Scrotal	IMF	Rea	Fat	%RP
	+2.1	+31	+21	+66	+99	+13	.15	+010	-200
#Pathfinder									
Gardens Prime Time 12007667				#R R Traveler 5204 #Green Garden Susie 1246 S1			#Q A S Traveler 23-4 Eriskay of Rollin Rock 3302 Gardens Transition 7205 S1 Green Garden Susie 9118 S2		
Green Garden Pride 8154 S1 13167911				Summitcrest Perfection #Green Garden Pride 2154 S1			Summitcrest Mamie T009 Gardens Transition 7205 S1 B A F Rito Pride 1892		

Birth 75	Wean 566	Rat: 102	Year 1044	Rat: 105
Adj. Ht. 49.9	Adj. SC 40.0	Dam's PR: 1	WR 102	1 YR 105 Age 3 Wt. 1035

31**Gardens Highmark A272 S1**

		10/11/00 Bull			13818764		A272		
EPD	Birth	Wean	Milk	Year	Scrotal	IMF	Rea	Fat	%RP
	+1.0	+33	+15	+63	+36	+30	+38	+014	+320
#Pathfinder									
Gardens Highmark 13047487				Summitcrest Scotch Cap OB45 Green Garden Pride 6128 S1			#Scotch Cap #Summitcrest Heiress OT09 #N Bar Emulation EXT Green Garden Pride 4128 #Emulation N Bar 5522		
Green Garden Lady 6255 S2 12689070				#N Bar Emulation EXT Green Garden Lady 4256 S2			N Bar Primrose 2424 Gardens Transition 7205 S1 B A F Captains Lady D990		

Birth 70	Wean 568	Rat: 99	Year 970	Rat: 96
Adj. Ht. 48.8	Adj. SC 38.0	Dam's PR: 3	WR 100	3 YR 96 Age 5 Wt. 1100

34**Gardens Prime Time A157 S1**

		09/29/00 Bull			13818740		A157		
EPD	Birth	Wean	Milk	Year	Scrotal	IMF	Rea	Fat	%RP
	+1.5	+32	+18	+65	+40	+09	.11	+011	-120
#Pathfinder									
Gardens Prime Time 12007667				#R R Traveler 5204 #Green Garden Susie 1246 S1			#Q A S Traveler 23-4 Eriskay of Rollin Rock 3302 Gardens Transition 7205 S1 Green Garden Susie 9118 S2		
Green Garden Pride 8153 S1 13167910				Gardens Opto 6071 #Green Garden Pride 5154 S1			Gardens Extender Green Garden Rita 227 S2 Gardens Director #Green Garden Pride 2154 S1		

Birth 73	Wean 544	Rat: 98	Year 995	Rat: 100
Adj. Ht. 49.0	Adj. SC 36.9	Dam's PR: 1	WR 96	1 YR 100 Age 3 Wt. 1010

32**Gardens Highmark A B2 S2**

		11/03/00 Bull			13818791		AB2		
EPD	Birth	Wean	Milk	Year	Scrotal	IMF	Rea	Fat	%RP
	+2.2	+37	+15	+69	-.04	+30	+09	+004	+040
#Pathfinder									
Gardens Highmark 13047487				Summitcrest Scotch Cap OB45 Green Garden Pride 6128 S1			#Scotch Cap #Summitcrest Heiress OT09 #N Bar Emulation EXT Green Garden Pride 4128 #Emulation N Bar 5522		
Green Garden Leah 5289 S2 12320330				#N Bar Emulation EXT Green Garden Leah 9238 S2			N Bar Primrose 2424 #Schurrtop Fortune 3261 Green Garden Leah 4125		

Birth 85	Wean 571	Rat: 99	Year 973	Rat 96
Adj. Ht. 50.8	Adj. SC 35.6	Dam's PR: 3	WR 100	3 YR 97 Age 6 Wt. 1445

35**Gardens Prime Time A245 S1**

		09/17/00 Bull			13818755		A245		
EPD	Birth	Wean	Milk	Year	Scrotal	IMF	Rea	Fat	%RP
	+1.3	+24	+19	+60	+22	+11	+04	+007	+120
#Pathfinder									
Gardens Prime Time 12007667				#R R Traveler 5204 #Green Garden Susie 1246 S1			#Q A S Traveler 23-4 Eriskay of Rollin Rock 3302 #Gardens Transition 7205 S1 Green Garden Susie 9118 S2		
Green Garden Protet 524 12469015				#N Bar Emulation EXT Green Garden Protet3C6			#Emulation N Bar 5522 N Bar Primrose 2424 #Rito 9J9 of B156 7T26 Green Garden Protet 051C		

Birth 76	Wean 457	Rat: 82	Year 923	Rat 93
Adj. Ht. 48.7	Adj. SC 36.2	Dam's PR: 4	WR 97	3 YR 100 Age 6 Wt. 1200

36**Gardens Prime Time AB21 S1**

10/05/00 Bull		13818792		AB21				
Birth	Wean	Milk	Year	Scrotal	IMF	Rea	Fat	%RP
EPD +1.3	+34	+17	+55	+56	+04	+05	+011	-060
#Pathfinder								
Gardens Prime Time 861 S1 13187346			Gardens Prime Time Green Garden Lucy 660 S1			#R R Traveler 5204 #Green Garden Susie 1246 S1 N Bar Emulation EXT Green Garden Lucy 475 S2 #N Bar Emulation EXT Summitcrest Estelle Y115		
Green Garden Anna 8B1 S2 13167892			Gardens Extender Green Garden Anna 1259 S2			#S A Direct Drive 83 Baf Captains Blue Ribbon		
Birth 76	Wean 641	Ra.: 111	Year 1015	Rat: 100				
Adj. Ht. 49.5	Adj. SC 38.0	Dam's PR: 1 WR 111	1 YR 100	Age 3	Wt. 1000			

37**Gardens Prime Time AB25 S1**

10/30/00 Bull		13818794		AB25				
Birth	Wean	Milk	Year	Scrotal	IMF	Rea	Fat	%RP
EPD +0.2	+31	+15	62	+38	+09	+27	+024	+010
#Pathfinder								
Gardens Prime Time 861 S1 13187346			Gardens Prime Time Green Garden Lucy 660 S1			#R R Traveler 5204 #Green Garden Susie 1246 S1 N Bar Emulation EXT Green Garden Lucy 475 S2 Gardens Extender Green Garden Rita 227 S2		
Green Garden Dinah 826 S1 13167925			Gardens Opto 6071 Garden Dinah 4262 S2			#N Bar Emulation EXT Green Garden Dinah 9262		
Birth 74	Wean 565	Rat: 98	Year 1024	Rat: 99				
Adj. Ht. 49.2	Adj. SC 36.0	Dam's PR: 1 WR 98	1 YR 99	Age 3	Wt. 990			

38**Gardens Prime Time A075 S2**

10/30/00 Bull		13818733		A075				
Birth	Wean	Milk	Year	Scrotal	IMF	Rea	Fat	%RP
EPD +2.6	+29	+18	+59	+46	+14	+08	-005	+030
#Pathfinder								
Gardens Prime Time 861 S1 13187346			Gardens Prime Time Green Garden Lucy 660 S1			#R R Traveler 5204 #Green Garden Susie 1246 S1 N Bar Emulation EXT Green Garden Lucy 475 S2 #Scotch Cap Summitcrest Scotch Cap OB45		
Green Garden Rita 8070 S1 13167906			Summitcrest Heiress 0T09 Green Garden Rita 2027 S2			#S A Direct Drive 83 #War Rito 9027 5105 7007		
Birth 82	Wean 565	Rat: 102	Year 1026	Rat: 103				
Adj. Ht. 48.9	Adj. SC 38.2	Dam's PR: 1 WR 102	1 YR 103	Age 3	Wt. 1020			

39**Gardens Prime Time A048 S1**

11/12/00 Bull		13818730		A048				
Birth	Wean	Milk	Year	Scrotal	IMF	Rea	Fat	%RP
EPD +0.6	+34	+18	+61	+30	+02	+15	+018	-070
#Pathfinder								
Gardens Prime Time 861 13187346			Gardens Prime Time Green Garden Lucy 660 S1			#R R Traveler 5204 #Green Garden Susie 1246 S1 N Bar Emulation EXT Green Garden Lucy 475 S2 Gardens Extender Green Garden Rita 227 S2		
Green Garden Jilt 8042 S1 13214463			Gardens Opto 6071 Green Garden Jilt 7041 S1			#N Bar Emulation EXT Green Garden Jilt 5040 S1		
Birth 76	Wean 616	Rat: 107	Year 1018	Rat: 100				
Adj. Ht. 49.1	Adj. SC 35.6	Dam's PR: 1 WR 107	1 YR 100	Age 3	Wt. 1030			

40**Gardens Prime Time AB 23 S1**

11/05/00 Bull		13818792		AB23				
Birth	Wean	Milk	Year	Scrotal	IMF	Rea	Fat	%RP
EPD +1.0	+30	+21	+58	+56	+03	+30	+006	+250
#Pathfinder								
Gardens Prime Time 861 13187346			Gardens Prime Time Green Garden Lucy 660 S1			#R R Traveler 5204 #Green Garden Susie 1246 S1 N Bar Emulation EXT Green Garden Lucy 475 S2 #R R Traveler 5204		
Green Garden Sophie 8262 S1 13167926			Gardens Prime Time #Green Garden Sophie 5263 S2			#Green Garden Susie 1246 S1 Gardens Transition 7205 S1 #Green Garden Sophie 2256		
Birth 74	Wean 593	Rat: 107	Year 995	Rat: 100				
Adj. Ht. 49.0	Adj. SC 37.0	Dam's PR: 1 WR 107	1 YR 100	Age 3	Wt. 1110			

41**Gardens EXT A268 S2**

09/14/00 Bull		13818763		A268				
Birth	Wean	Milk	Year	Scrotal	IMF	Rea	Fat	%RP
EPD +3.7	+38	+18	+75	-38	-04	+19	+009	+040
#Pathfinder								
#N Bar Emulation EXT 10776479			#Emulation N Bar 5522 N Bar Primrose 2424			#Emulation 31 Ankony 8F78 Lass 8F275 Emulation 31 Primrose N Bar 9962 #Scotch Cap Summitcrest Mamie T009		
#Green Garden Gina 12154966			Summitcrest Perfection Green Garden Gina 0261 S2			#Rambo 465T of J R S B A F Georgina Excel 1611		
Birth 86	Wean 576	Rat: 100	Year 1040	Rat: 103				
Adj. Ht. 50.0	Adj. SC 36.0	Dam's PR: 6 WR 103	6 YR 104	Age 8	Wt. 1160			

42**Gardens Opto A19 S1**

11/03/00 Bull		14042702		A19				
Birth	Wean	Milk	Year	Scrotal	IMF	Rea	Fat	%RP
EPD +1.5	+36	+14	+60	+39	+15	+08	+029	-310
#Pathfinder								
Gardens Opto 6071 12555908			Gardens Extender Green Garden Rita 227 S2			#N Bar Emulation EXT Summitcrest Estelle Y115 S A Direct Drive 83 #War Rito 9027 5105 7007 #Traveler 1148 G D A R N Bar Clova Pride 2264		
Green Garden Jilt 021 S1 S1 11433392			Gardens Transition 7204 s1 #Green Garden Jilt 820 S1			#N Bar Emulation EXT Green Garden Jilt 520 C		
Birth 84	Wean 635	Rat: 110	Year 1046	Rat: 103				
Adj. Ht. 49.3	Adj. SC 38.0	Dam's PR: 9 WR 100	9 YR 100	Age 11	Wt. 1212			

43**Gardens Opto A161 S1**

10/27/00 Bull		13818744		A161				
Birth	Wean	Milk	Year	Scrotal	IMF	Rea	Fat	%RP
EPD +0.3	+28	+13	+54	+04	+11	+31	+032	+010
#Pathfinder								
Gardens Opto 6071 12555908			Gardens Extender Green Garden Rita 227 S2			#N Bar Emulation EXT Summitcrest Estelle Y115 #S A Direct Drive 83 #War Rito 9027 5105 7007 #Emulation N Bar 5522 N Bar Primrose 2424		
#Green Garden Lady 12215564			Green Garden Lady 1160 S1			#S A Direct Drive 83 Rito Emulous Lady B A F		
Birth 74	Wean 531	Rat: 92	Year 971	Rat: 96				
Adj. Ht. 48.7	Adj. SC 35.0	Dam's PR: 5 WR 101	5 YR 102	Age 7	Wt. 1100			

44**Gardens Opto A262 S2**

		10/18/00 Bull				13818760		A262			
EPD	Birth	Wean	Milk	Year	Scrotal	IMF	Rea	Fat	%RP		
	+2.5	+32	+16	+49	-.36	-.05	+.01	+.004	+.050	#Pathfinder	
		Gardens Extender				#N Bar Emulation EXT					
Gardens Opto 6071		Green Garden Rita 227 S2				Summitcrest Estelle Y115		S A Direct Drive 83			
12555908		Gardens Transition 7205 S1				#War Rito 9027 5105 7007		#Traveler 1148 G D A R			
#Green Garden Sophie 5263 S2		N Bar Clova Pride 2264				Summitcrest Perfection					
12469023		#Green Garden Sophie 2256 S3				B A F Captains Lady D990					

Birth 82	Wean 566	Rat: 102	Year 891	Rat: 90
Adj. Ht. 48.8	Adj. SC 35.7	Dam's PR: 9 WR 100	8 YR 99	Age 11 Wt. 1250

This calf got sick right after he was weaned and did not respond to feed very well - since we got him back on track he has done well.

45**Gardens Opto A41 S1**

		11/26/00 Bull				13818770		A41			
EPD	Birth	Wean	Milk	Year	Scrotal	IMF	Rea	Fat	%RP		
	+1.4	+34	+12	+55	+.27	+.09	+.07	+.010	-.310	#Pathfinder	
		Gardens Extender				#N Bar Emulation EXT					
Gardens Opto 6071		Green Garden Rita 227 S2				Summitcrest Estelle Y115		S A Direct Drive 83			
12555908		Gardens Transition 7205 S1				#War Rito 9027 5105 7007		#Traveler 1148 G D A R			
Green Garden Eulaine 0241 S1		N Bar Clova Pride 2264				#N Bar Emulation EXT					
11433366		#Green Garden Eulaine 892 S2				Green Garden Eulaine 690C					

Birth 82	Wean 580	Rat: 101	Year 959	Rat: 95
Adj. Ht. 49.2	Adj. SC 37.5	Dam's PR: 4 WR 107	4 YR 102	Age 6 Wt. 1180

46**Gardens Opto A E3 S1**

		12/13/00 Bull				13818797		AE3			
EPD	Birth	Wean	Milk	Year	Scrotal	IMF	Rea	Fat	%RP		
	+0.9	+30	+12	+55	+.20	+.09	+.04	+.019	-.220	#Pathfinder	
		Gardens Extender				#N Bar Emulation EXT					
Gardens Opto 6071		Green Garden Rita 227 S2				Summitcrest Estelle Y115		S A Direct Drive 83			
12555908		Gardens Transition 7205 S1				#War Rito 9027 5105 7007		#Traveler 1148 G D A R			
Green Garden Koeta 467 S1		N Bar Clova Pride 2264				#Emulation N Bar 5522					
12215590		Green Garden Koeta 7110 S1				Green Garden Koeta 5110C					

Birth 80	Wean 582	Rat: 100	Year 1075	Rat: 100
Adj. Ht. 49.0	Adj. SC 35.2	Dam's PR: 4 WR 104	4 YR 104	Age 8 Wt. 1000

47**Gardens Transition A68 S1**

		08/20/00 Bull				13818783		A68			
EPD	Birth	Wean	Milk	Year	Scrotal	IMF	Rea	Fat	%RP		
	-0.1	+26	+20	+47	+.23	+.05	+.0	+.006	+.010	#Pathfinder	
		Gardens Transition 7205 S1				#Traveler 1148 G D A R					
Gardens Transition 480 S1		N Bar Clova Pride 2264				N Bar Emulation EXT					
12166834		#Green Garden Eulaine 878 S1				Green Garden Eulaine 678C		#Scotch Cap			
Green Garden Barbie 869 S2		Summitcrest Perfection				Summitcrest Mamie T009					
13167884		Green Garden Barbie 569 S1				#Green Garden Barbie 166 S1					

Birth 66	Wean 545	Rat: 98	Year 971	Rat: 98
Adj. Ht. 49.1	Adj. SC 36.0	Dam's PR: 1 WR 98	1 YR 98	Age 3 Wt. 1020

The report below is a breakdown of the data obtained on 47 steer calves produced from semen from Green Garden Angus. There were three test bulls Gardens Perfection 719, Gardens Highmark, Gardens Bravo, and one reference sire Scotch Cap OB45. The semen was randomly assigned to the KSU Agriculture Research Center - Hays Station cowherd during the 1999 breeding season. This is a typical mixed breed cow herd that averaged about 50% Angus, while the rest was predominately Simmental and a little Brahman. The overall carcass performance of the calves was phenomenal. After regrading by USDA graders only one steer graded Select and 32 head (68%) were CAB or Prime (6 head went Prime). The ultrasound evaluations made during the feeding phase projected the exceptional carcass quality and 4 head were pulled from the test and were entered in the Garden City Beef Empire Days carcass contest. One steer was Grand Champion Carcass Steer and the other three placed 10th, 11th, and 19th.

Sire	SC OB45	Perfection 719	Gardens Highmark	Gardens Bravo
No. of calves	12	16	14	5
Weaning Wt.	553	572	595	594
Yearling Wt.	950	1006	1032	993
Carcass Wt.	787	833	873	804
Dressing %	64.35	64.62	65.18	65.54
Bachfat in inches	.48	.42	.46	.51
Marbling score	6.61	6.36	5.90	5.34
Rib Eye Area	13.39	14.14	15.13	13.11
USDA Yield Grade	2.85	2.37	2.20	2.63



Gardens SST BB7 S1

48 Gardens SST BB7 S1

02/28/01		Bull		13843537		BB7			
Birth	Wean	Milk	Year	Scrotal	IMF	Rea	Fat	% RP	
EPD	-0.6	+25	+12	+61	+20	+25	-0.03	-0.002	+0.10
#Pathfinder									
# D H D Traveler 6807					# Q A S Traveler 23-4				
S S Traveler 6807 T510					# Bemindful Maid D H D 0807				
12502030 # S S Miss Hi Spade A114					Hoff Hi Spade S C 491				
					S S Miss Rito 0H3 5H9				
					# Traveler 1148 G D A R				
					N Bar Clova Pride 2264				
Gardens Transition 7205 S1					# V D A R Power Play 91				
Green Garden Ellie 5B7					Green Garden Pridelia 13C				
12320355 Green Garden Pridelia 847S1									
BW 82		205 day wt. 644		Rat: 97		365 day wt. 1212		Rat: 108	
Adj. Ht. 51.4		Adj. SC 38.0		Dam's PR: 5 WR 94		5 YR 99		Age 6 Wt. 1370	

49 Gardens SST B130 S1

02/06/01		Bull		13843519		B130			
Birth	Wean	Milk	Year	Scrotal	IMF	Rea	Fat	% RP	
EPD	-1.0	+33	+17	+68	-0.02	+0.25	+0.04	+0.003	+0.10
#Pathfinder									
# D H D Traveler 6807					# Q A S Traveler 23-4				
S S Traveler 6807 T510					# Bemindful Maid D H D 0807				
12502030 # S S Miss Hi Spade A114					Hoff Hi Spade S C 491				
					S S Miss Rito 0H3 5H9				
					# Emulation N Bar 5522				
# N Bar Emulation EXT					N Bar Primrose 2424				
Green Garden Bonnie 6135 S1					# Lemmon Impact				
12555926 # Green Garden Bonnie 0131 S1					Green Garden Bonnie 7133 C				
BW 82		205 day wt. 724		Rat: 109		365 day wt. 1158		Rat: 103	
Adj. Ht. 50.3		Adj. SC 37.0		Dam's PR: 4 WR 101		4 YR 101		Age 5 Wt. 1234	

50 Gardens SST B45 S1

02/12/01		Bull		13843523		B45			
Birth	Wean	Milk	Year	Scrotal	IMF	Rea	Fat	% RP	
EPD	+0.5	+33	+18	+55	-0.17	+0.25	+0.02	+0.001	+0.1
#Pathfinder									
# D H D Traveler 6807					# Q A S Traveler 23-4				
S S Traveler 6807 T510					# Bemindful Maid D H D 0807				
12502030 # S S Miss Hi Spade A114					Hoff Hi Spade S C 491				
					S S Miss Rito 0H3 5H9				
					# Emulation 31				
Emulation N Bar 5522					Ankony 8F78 Lass 8F275				
Green Garden Pridelia 9206 S1					Strong Pursuit				
13283404 Green Garden Pridelia 660 C					Green Garden Pridelia 458 C				
BW 76		205 day wt. 631		Rat: 95		365 day wt. 1132		Rat: 101	
Adj. Ht. 50.4		Adj. SC 37.2		Dam's PR: 11 WR 102		11 YR 101		Age 12 Wt. 1230	

51 Gardens SST B13 S1

02/12/01		Bull		13843522		B13			
Birth	Wean	Milk	Year	Scrotal	IMF	Rea	Fat	% RP	
EPD	+0.8	+28	+17	+66	+0.37	+0.30	+0.21	+0.006	+0.150
#Pathfinder									
# D H D Traveler 6807					# Q A S Traveler 23-4				
S S Traveler 6807 T510					# Bemindful Maid D H D 0807				
12502030 # S S Miss Hi Spade A114					Hoff Hi Spade S C 491				
					S S Miss Rito 0H3 5H9				
					# R R Traveler 5204				
Gardens Prime Time					# Green Garden Susie 1246 S1				
Green Garden Jilt 915 S1					Gardens Transition 7205 S1				
13312741 Green Garden Jilt 5206 S1					Green Garden Jilt 3207 S1				
BW 84		205 day wt. 643		Rat: 97		365 day wt. 1102		Rat: 98	
Adj. Ht. 49.9		Adj. SC 38.0		Dam's PR: 1 WR 97		1 YR 98		Age 2 Wt. 1190	

52 Gardens SST B265 S2

02/16/01		Bull		13843526		B265			
Birth	Wean	Milk	Year	Scrotal	IMF	Rea	Fat	% RP	
EPD	+0.6	+35	+13	+65	-0.04	+0.24	-0.04	-0.004	+0.020
#Pathfinder									
# D H D Traveler 6807					# Q A S Traveler 23-4				
S S Traveler 6807 T510					# Bemindful Maid D H D 0807				
12502030 # S S Miss Hi Spade A114					Hoff Hi Spade S C 491				
					S S Miss Rito 0H3 5H9				
					# Emulation N Bar 5522				
# N Bar Emulation EXT					N Bar Primrose 2424				
Green Garden Eulima 4265 S2					# Schurrtop Fortune 3261				
12166875 Green Garden Eulima 9130 S2					Green Garden Eulima 32 C				
BW 91		205 day wt. 686		Rat: 104		365 day wt. 1124		Rat: 101	
Adj. Ht. 51.0		Adj. SC 36.0		Dam's PR: 4 WR 102		3 YR 100		Age 7 Wt. 1340	

53 Gardens SST B055 S2

02/25/01		Bull		13843533		B055			
Birth	Wean	Milk	Year	Scrotal	IMF	Rea	Fat	% RP	
EPD	+1.3	+31	+19	+61	+0.08	+0.24	+0.16	-0.001	+0.150
#Pathfinder									
# D H D Traveler 6807					# Q A S Traveler 23-4				
S S Traveler 6807 T510					# Bemindful Maid D H D 0807				
12502030 # S S Miss Hi Spade A114					Hoff Hi Spade S C 491				
					S S Miss Rito 0H3 5H9				
					# Scotch Cap				
Summitcrest Scotch Cap 0B45					# Summitcrest Heiress 0T09				
Green Garden Sandy 7055 S2					# S S Rito 0715 0H3				
12851231 Green Garden Sandy 3021 S1					Sandys Revolution M M 091				
BW 90		205 day wt. 700		Rat: 106		365 day wt. 1150		Rat: 103	
Adj. Ht. 51.8		Adj. SC 36.0		Dam's PR: 3 WR 103		2 YR 104		Age 4 Wt. 1450	

54 Gardens SST B242 S1

02/07/01		Bull		13843520		B242			
Birth	Wean	Milk	Year	Scrotal	IMF	Rea	Fat	% RP	
EPD	-0.7	+30	+16	+68	+0.21	+0.30	+0.03	+0.009	-0.050
#Pathfinder									
# D H D Traveler 6807					# Q A S Traveler 23-4				
S S Traveler 6807 T510					# Bemindful Maid D H D 0807				
12502030 # S S Miss Hi Spade A114					Hoff Hi Spade S C 491				
					S S Miss Rito 0H3 5H9				
					# R R Traveler 5204				
Gardens Prime Time					# Green Garden Susie 1246 S1				
Green Garden Jilt 9242 S1					# N Bar Emulation EXT				
13283409 Green Garden Jilt 814 S2					# Green Garden Jilt 612C				
BW 77		205 day wt. 675		Rat: 102		365 day wt. 1160		Rat: 104	
Adj. Ht. 49.8		Adj. SC 38.0		Dam's PR: 1 WR 102		1 YR 104		Age 2 Wt. 1090	



Gardens SST B032 S2

58 Gardens SST B072 S1

EPD	02/27/01 Bull 13843535 B072								
	Birth	Wean	Milk	Year	Scrotal	IMF	Rea	Fat	% RP
	+0	+28	+17	+60	+1.8	+35	+32	-.001	+320

#Pathfinder

D H D Traveler 6807
S S Traveler 6807 T510
12502030 # S S Miss Hi Spade A114

G T Expo
Green Garden Rita 8072 S1
13084445 Green Garden Rita 3027 S1

Q A S Traveler 23-4
Bemindful Maid D H D 0807
Hoff Hi Spade S C 491
S S Miss Rito 0H3 5H9
Scotch Cap
GT Pine Siskin
Gardens Transition 7205 S1
War Rito 9027 5105 7007

BW 80	205 day wt. 667	Rat: 101	365 day wt. 1080	Rat: 97
Adj. Ht. 51.4	Adj. SC 37.0	Dam's PR: 2 WR 108	2 YR 103	Age 3 Wt. 1255

55 Gardens SST B032 S2

EPD	02/28/01 Bull 13843538 B032								
	Birth	Wean	Milk	Year	Scrotal	IMF	Rea	Fat	% RP
	+0.1	+29	+14	+61	-.04	+27	+13	+0.003	+100

#Pathfinder

D H D Traveler 6807
S S Traveler 6807 T510
12502030 # S S Miss Hi Spade A114

Gardens Extender
Green Garden Lass 7030 S2
12784413 Green Garden Lass

Q A S Traveler 23-4
Bemindful Maid D H D 0807
Hoff Hi Spade S C 491
S S Miss Rito 0H3 5H9
N Bar Emulation EXT
Summitcrest Estelle Y115
S A Direct Drive 83
Leachman Band Lass 9525

BW 82	205 day wt. 658	Rat: 99	365 day wt. 1133	Rat: 101
Adj. Ht. 49.9	Adj. SC 36.0	Dam's PR: 3 WR 99	3 YR 100	Age 4 Wt. 1430

59 Gardens SST B73 S1

EPD	02/08/01 Bull 13843521 B73								
	Birth	Wean	Milk	Year	Scrotal	IMF	Rea	Fat	% RP
	-1.8	+24	+13	+55	+22	+25	-.05	N/A	-.040

#Pathfinder

D H D Traveler 6807
S S Traveler 6807 T510
12502030 # S S Miss Hi Spade A114

Summitcrest Scotch Cap 0B45
Green Garden Pride 773 S1
12851228 Green Garden Pride 074 S1

Q A S Traveler 23-4
Bemindful Maid D H D 0807
Hoff Hi Spade S C 491
S S Miss Rito 0H3 5H9
Scotch Cap
Summitcrest Heiress 0T09
Schurrtop Fortune 3261
Green Garden Pride 776 S1

BW 73	205 day wt. 595	Rat: 90	365 day wt. 1049	Rat: 94
Adj. Ht. 49.3	Adj. SC 37.0	Dam's PR: 2 WR 91	2 YR 93	Age 4 Wt. 1325

56 Gardens SST B073 S1 (ET)

EPD	02/28/01 Bull 13853464 B073								
	Birth	Wean	Milk	Year	Scrotal	IMF	Rea	Fat	% RP
	-0.6	+29	+19	+66	+1.1	+36	+13	N/A	+130

#Pathfinder

D H D Traveler 6807
S S Traveler 6807 T510
12502030 # S S Miss Hi Spade A114

Summitcrest Scotch Cap 0B45
Green Garden Bonnie 9130 S1
13312758 Green Garden Bonnie 6135 S1

Q A S Traveler 23-4
Bemindful Maid D H D 0807
Hoff Hi Spade S C 491
S S Miss Rito 0H3 5H9
Scotch Cap
Summitcrest Heiress 0T09
N Bar Emulation EXT
Green Garden Bonnie 0131 S1

BW 68	205 day wt. 672	Rat: 100	365 day wt. 1010	Rat: 100
Adj. Ht. 48.9	Adj. SC 35.0	Dam's PR: 1 WR 106	1 YR 100	Age 2 Wt. 1130

60 Gardens SST BE8 (ET)

EPD	02/01/01 Bull 13853462 BE8								
	Birth	Wean	Milk	Year	Scrotal	IMF	Rea	Fat	% RP
	-1.0	+27	+17	+60	+1.8	+27	+17	-.004	+210

#Pathfinder

D H D Traveler 6807
S S Traveler 6807 T510
12502030 # S S Miss Hi Spade A114

G T Expo
Green Garden Lucy 760 S1
12911450 Green Garden Lucy 475 S2

Q A S Traveler 23-4
Bemindful Maid D H D 0807
Hoff Hi Spade S C 491
S S Miss Rito 0H3 5H9
Scotch Cap
GT Pine Siskin
Gardens Transition 7205 S1
Green Garden Lucy 12 S1

BW 68	205 day wt. 556	Rat 100	365 day wt. 1035	Rat: 100
Adj. Ht. 48.6	Adj. SC 38.0	Dam's PR: 12 WR 102	12 YR 101	Age 4 Wt. 1200

57 Gardens SST B092 S1

EPD	02/13/01 Bull 13843525 B092								
	Birth	Wean	Milk	Year	Scrotal	IMF	Rea	Fat	% RP
	-0.7	+30	+14	+58	-.04	+25	-.04	-.002	+010

#Pathfinder

D H D Traveler 6807
S S Traveler 6807 T510
12502030 # S S Miss Hi Spade A114

Gardens Extender
Green Garden Poppy 6091 S1
12555913 Green Garden Poppy 309 S2

Q A S Traveler 23-4
Bemindful Maid D H D 0807
Hoff Hi Spade S C 491
S S Miss Rito 0H3 5H9
N Bar Emulation EXT
Summitcrest Estelle Y115
S A Direct Drive 83
Green Garden Poppy 1948 S1

BW 82	205 day wt. 648	Rat: 97	365 day wt. 1072	Rat: 97
Adj. Ht. 49.9	Adj. SC 37.0	Dam's PR: 4 WR 96	3 YR 96	Age 5 Wt. 1100

61 Gardens SST B082 S1 (ET)

EPD	02/10/01 Bull 13853463 B082								
	Birth	Wean	Milk	Year	Scrotal	IMF	Rea	Fat	% RP
	-1.0	+27	+17	+60	+1.8	+27	+17	-.004	+210

BW 52	205 day wt. 532	Rat: 100	365 day wt. 888	Rat: 100
Adj. Ht. 48.4	Adj. SC 32.0	Dam's PR: 12 WR 102	12 YR 101	Age 4 Wt. 1200

62**Gardens SST B010 S1**

02/03/01		Bull			13843517		B010		
Birth	Wean	Milk	Year	Scrotal	IMF	Rea	Fat	% RP	
EPD	-0.6	+25	+15	+53	+26	+23	-.01	-.006	+0.050
#Pathfinder									
# D H D Traveler 6807					# Q A S Traveler 23-4				
S S Traveler 6807 T510					# Bemindful Maid D H D 0807				
12502030 # S S Miss Hi Spade A114					Hoff Hi Spade S C 491				
					S S Miss Rito 0H3 5H9				
					# Traveler 1148 G D A R				
Gardens Transition 7205 S1					N Bar Clova Pride 2264				
Green Garden Estelle 4113 S2					# Premier Independence K N				
12160403 Summitcrest Estelle Y115					# Summitcrest Estelle U011				
BW 84		205 day wt 623		Rat: 94		365 day wt. 1077		Rat: 96	
Adj. Ht. 50.7		Adj. SC 39.0		Dam's PR: 6 WR 100		5 YR 96		Age 7 Wt. 1260	

**Gardens Precision B129 S2**

Lot 63 is a maternal brother to Gardens Highmark (Ref. Sire E)

63**Gardens Precision B129 S2**

01/30/01		Bull			13890717		B129		
Birth	Wean	Milk	Year	Scrotal	IMF	Rea	Fat	% RP	
EPD	+2.1	+36	+21	+79	-.05	+26	+1.18	+0.001	+2.40
#Pathfinder									
# G A R Precision 1680					# Tehama Bando 155				
Twin Valley Precision E161					9J9 G A R 856				
12346200 W C C Blackcap C9					# S S Traveler 6T6				
					Premier Blackcap 6276A				
					# Emulation N Bar 5522				
# N Bar Emulation EXT					N Bar Primrose 2424				
Green Garden Pride 6128 S1					Gardens Transition 7205 S1				
12555922 Green Garden Pride 4128 S1					Green Garden Pride 9128 S1				
BW 91		205 day wt. 673		Rat: 102		365 day wt. 1183		Rat: 106	
Adj. Ht. 50.6		Adj. SC 40.0		Dam's PR: 4 WR 98		3 YR 105		Age 5 Wt. 1260	

64**Gardens Prime Time B244 S1**

02/20/01		Bull			13844984		B244		
Birth	Wean	Milk	Year	Scrotal	IMF	Rea	Fat	% RP	
EPD	+1.5	+26	+21	+63	+57	+06	-.01	+0.007	-.060
#Pathfinder									
# R R Traveler 5204					# Q A S Traveler 23-4				
Gardens Prime Time					Eriskay of Rollin Rock 3302				
12007667 # Green Garden Susie 1246 S1					Gardens Transition 7205 S1				
					Green Garden Susie 9118 S2				
					# Scotch Cap				
Summitcrest Scotch Cap 0B45					# Summitcrest Heiress 0T09				
Green Garden Jilt 7242 S2					# N Bar Emulation EXT				
12851686 Green Garden Jilt 814 S2					# Green Garden Jilt 612C				
BW 85		205 day wt. 650		Rat: 98		365 day wt. 1130		Rat: 101	
Adj. Ht. 50.1		Adj. SC 39.0		Dam's PR: 3 WR 100		3 YR 100		Age 4 Wt. 1200	

65**Gardens Prime Time B25 S1 (ET)**

03/25/01		Bull			13844988		B25		
Birth	Wean	Milk	Year	Scrotal	IMF	Rea	Fat	% RP	
EPD	+0.3	+26	+22	+61	+53	+07	-.08	+0.008	-.100
#Pathfinder									
# R R Traveler 5204					# Q A S Traveler 23-4				
Gardens Prime Time					Eriskay of Rollin Rock 3302				
12007667 # Green Garden Susie 1246 S1					# Gardens Transition 7205 S1				
					Green Garden Susie 9118 S2				
					# Black Witch Corbinaire 95				
					# Lemmon Elga 3020				
# Lemmon Impact					# S S Rito 0715 0H3				
# Green Garden Bonnie 1134 S1					Green Garden Bonnie 7133 C				
11652661 # Green Garden Bonnie 930 S1									
BW 70		205 day wt. 644		Rat: 100		365 day wt. 983		Rat: 100	
Adj. Ht. 50.2		Adj. SC 35.0		Dam's PR: 6 WR 105		7 YR 108		Age 10 Wt. 1250	

66**Gardens Prime Time B076 S1**

02/10/01		Bull			13844983		B076		
Birth	Wean	Milk	Year	Scrotal	IMF	Rea	Fat	% RP	
EPD	+1.3	+23	+20	+56	+67	+26	-.06	+0.005	+0.030
#Pathfinder									
# R R Traveler 5204					# Q A S Traveler 23-4				
Gardens Prime Time					Eriskay of Rollin Rock 3302				
12007667 # Green Garden Susie 1246 S1					Gardens Transition 7205 S1				
					Green Garden Susie 9118 S2				
					# Scotch Cap				
Summitcrest Scotch Cap 0B45					# Summitcrest Heiress 0T09				
Green Garden Rita 9076 S2					Gardens Extender				
13373792 Green Garden Rito 6070 S2					Green Garden Rita 2027 S2				
<i>Lot 66 is a Prime Time son out of EXT 4137's (ref. Sire C) dam.</i>									
BW 74		205 day wt. 633		Rat: 96		365 day wt. 1083		Rat: 97	
Adj. Ht. 49.5		Adj. SC 36.0		Dam's PR: 1 WR 96		1 YR 97		Age 2 Wt. 1035	

ROCKY R RANCH

Roy and Carol Soukup
P.O. Box 43
Hanston, KS 67849
(620) 623-4641

February 20, 2002

Dear Dick and Shelly:

In the mid 90's the beef industry began moving toward marketing through the use of grids and formulas. The maximum value of our cattle could not longer be obtained by selling them as just a commodity. In 1996 we bought our first herd sire with marbling and carcass in mind from Green Garden. In 1997 we fed out our first crop of fall calves sire by him and he did make a significant difference. Each bull since 1996 has been selected using these same criteria. For the past three years our battery of herd bulls have been 100% carcass sires from Green Garden. By retaining our own replacement heifers, our herd is now coming into the second generation of select carcass breeding and we are seeing another significant increase in quality as the following figures show.

1999 calf crop: 61% choice or better; 11% CAB; Premium \$9.24/hd.
2000 calf crop: 91% choice or better; 42% CAB; Premium \$64.15/hd.

Today our herd sires must have a balance of calving ease, maternal instinct, moderate frame and carcass and easy to look at; while still keeping an eye on EPD's for BW, WW, MILK, YRLY, MARBLING, & RIBEYE. We have found all these qualities in the Green Garden bulls.

Looking forward to seeing you on sale day.

Sincerely,

67**Gardens Prime Time B025 S1**

03/10/01		Bull		13844985		B025			
Birth	Wean	Milk	Year	Scrotal	IMF	Rea	Fat	% RP	
EPD +1.5	+27	+15	+55	+38	+08	-06	+001	-030	
#Pathfinder					# Q A S Traveler 23-4 Eriskey of Rollin Rock 3302 Gardens Transition 7205 S1 Green Garden Susie 9118 S2 Gardens Extender Green Garden Rita 227 S2 # S A Direct Drive 83 Queen Mother 342				
# R R Traveler 5204 Gardens Prime Time 12007667 # Green Garden Susie 1246 S1									
Gardens Opto 6071 Green Garden Courtney 8024 S 13047464 # Sandy Mother M M 0342									
BW 83	205 day wt. 607		Rat: 91	365 day wt. 1004		Rat: 91			
Adj. Ht. 50.2	Adj. SC 37.0		Dam's PR: 2 WR 92 2 YR 93		Age 3		Wt. 1215		

**Gardens Highmark BB8 S1****68****Gardens Highmark BB8 S1**

03/26/01		Bull		13843593		BB8			
Birth	Wean	Milk	Year	Scrotal	IMF	Rea	Fat	% RP	
EPD +2.0	+37	+17	+64	+37	+21	+07	+008	-030	
#Pathfinder					# Scotch Cap # Summitcrest Heiress 0T09 N Bar Emulation EXT Green Garden Pride 4128 S1 # Traveler 1148 G D A R N Bar Clova Pride 2264 # N Bar Emulation EXT Green Garden Effie 9203 S1				
Summitcrest Scotch Cap 0B45 Gardens Highmark 13047487 Green Garden Pride 6128 S1									
Gardens Transition 7205 S1 Green Garden Effie 5B3 S1 12320353 Green Garden Effie 2113 S1									
BW 86	205 day wt. 752		Rat: 114	365 day wt. 1170		Rat: 105			
Adj. Ht. 52.3	Adj. SC 36.0		Dam's PR: 5 WR 102 4 YR 104		Age 6		Wt. 1120		

69**Gardens Highmark B50 S1**

03/12/01		Bull		13843584		B50			
Birth	Wean	Milk	Year	Scrotal	IMF	Rea	Fat	% RP	
EPD +1.1	+35	+19	+69	+21	+18	+24	+015	+080	
#Pathfinder					# Scotch Cap # Summitcrest Heiress 0T09 # N Bar Emulation EXT Green Garden Pride 4128 S1 # Emulation N Bar 5522 N Bar Primrose 2424 Gardens Transition 7205 S1 Green Garden Blossom 161 S1				
Summitcrest Scotch Cap 0B45 Gardens Highmark 13047487 Green Garden Pride 6128 S1									
# N Bar Emulation EXT Green Garden Blossom 758 S1 12779233 # Green Garden Blossom 559 S1									
BW 76	205 day wt. 693		Rat: 105	365 day wt. 1136		Rat: 102			
Adj. Ht. 51.3	Adj. SC 35.0		Dam's PR: 3 WR 102 3 YR 102		Age 4		Wt. 1300		

70**Gardens Highmark B295 S1**

03/11/01		Bull		13843581		B295			
Birth	Wean	Milk	Year	Scrotal	IMF	Rea	Fat	% RP	
EPD +1.1	+31	+17	+65	+08	+19	+07	+007	-020	
#Pathfinder					# Scotch Cap # Summitcrest Heiress 0T09 # N Bar Emulation EXT Green Garden Pride 4128 S1 # Emulation N Bar 5522 N Bar Primrose 2424 Strong Pursuit Green Garden Eulaine 67 C				
Summitcrest Scotch Cap 0B45 Gardens Highmark 13047487 Green Garden Pride 6128 S1									
# N Bar Emulation EXT Green Garden Eulaine 3296 S2 12007648 Green Garden Eulaine 690C									
BW 82	205 day wt. 650		Rat: 98	365 day wt. 1140		Rat: 102			
Adj. Ht. 50.8	Adj. SC 41.0		Dam's PR: 7 WR 99 7 YR 101		Age 8		Wt. 1300		

Lot 70's dam is a full sister to Gardens Highlight, a leading sire in Phil Lights herd in Turpin, OK.

71**Gardens Highmark B220 S2**

03/06/01		Bull		13843576		B220			
Birth	Wean	Milk	Year	Scrotal	IMF	Rea	Fat	% RP	
EPD +2.3	+36	+15	+67	+23	+24	+10	+013	+00	
#Pathfinder					# Scotch Cap # Summitcrest Heiress 0T09 N Bar Emulation EXT Green Garden Pride 4128 S1 # N Bar Emulation EXT # N Bar Blackbird 4307 # Scotch Cap Skyland BB Miss 114				
Summitcrest Scotch Cap 0B45 Gardens Highmark 13047487 Green Garden Pride 6128 S1									
N Bar Emulation Ext V722 Green Garden Beau 8220 S1 13047498 Green Garden Beau 1149 S2									
BW 88	205 day wt. 681		Rat: 102	365 day wt. 1131		Rat: 103			
Adj. Ht. 51.1	Adj. SC 38.0		Dam's PR: 2 WR 99 2 YR 101		Age 3		Wt. 1130		

72**Gardens Highmark B093 S2**

03/09/01		Bull		13843579		B093			
Birth	Wean	Milk	Year	Scrotal	IMF	Rea	Fat	% RP	
EPD +2.6	+29	+19	+57	+13	+34	+23	+003	+260	
#Pathfinder					# Scotch Cap # Summitcrest Heiress 0T09 # N Bar Emulation EXT Green Garden Pride 4128 S1 # Scotch Cap # GT Pine Siskin # S A Direct Drive 83 Green Garden Poppy 1948 S1				
Summitcrest Scotch Cap 0B45 Gardens Highmark 13047487 Green Garden Pride 6128 S1									
# G T Expo Green Garden Poppy 8091 S2 13084447 Green Garden Poppy 309 S2									
BW 88	205 day wt. 679		Rat: 103	365 day wt. 1129		Rat: 101			
Adj. Ht. 51.7	Adj. SC 38.0		Dam's PR: 1 WR 103 1 YR 101		Age 2		Wt. 1130		

73**Gardens Highmark BB6 S1**

03/03/01		Bull		13843575		BB6			
Birth	Wean	Milk	Year	Scrotal	IMF	Rea	Fat	% RP	
EPD +0.9	+25	+17	+54	+16	+16	+19	+012	+110	
#Pathfinder					# Scotch Cap # Summitcrest Heiress 0T09 N Bar Emulation EXT Green Garden Pride 4128 S1 # N Bar Explosion N Bar Enchantress U130 # Band 234 of Ideal 3163 Green Garden Barbella 2107 C				
Summitcrest Scotch Cap 0B45 Gardens Highmark 13047487 Green Garden Pride 6128 S1									
N Bar Explosion TNT Green Garden Barbie 404 S1 12166836 Green Garden Barbie 884 S2									
BW 82	205 day wt. 627		Rat: 95	365 day wt. 1086		Rat: 97			
Adj. Ht. 50.5	Adj. SC 37.0		Dam's PR: 5 WR 99 4 YR 94		Age 7		Wt. 1390		

74**Gardens Highmark B074 S1**

03/06/01		Bull		13843577		B074			
Birth	Wean	Milk	Year	Scrotal	IMF	Rea	Fat	% RP	
EPD	+1.5	+31	+15	+62	+16	+22	+0.08	+0.002	+0.040
#Pathfinder									
Summitcrest Scotch Cap 0B45					# Scotch Cap				
Gardens Highmark					# Summitcrest Heiress 0T09				
13047487 Green Garden Pride 6128 S1					N Bar Emulation EXT				
Gardens Extender					Green Garden Pride 4128 S1				
Green Garden Rita 629					# N Bar Emulation EXT				
12634591 Green Garden Rita 227 S2					Summitcrest Estelle Y115				
					# S A Direct Drive 83				
					# War Rito 9027 5105 7007				
BW 80	205 day wt. 636		Rat: 95		365 day wt. 1100		Rat: 100		
Adj. Ht. 50.6	Adj. SC 39.0		Dam's PR: 4 WR 96		4 YR 100		Age 5 Wt. 1360		

77**Gardens Bravo BB17 S2**

04/01/01		Bull		13843613		BB17			
Birth	Wean	Milk	Year	Scrotal	IMF	Rea	Fat	% RP	
EPD	+0.6	+31	+14	+62	-1.8	+1.2	+1.19	-0.005	+2.80
#Pathfinder									
# G T Expo					# Scotch Cap				
Gardens Bravo					# GT Pine Siskin				
13084451 Green Garden Beau 6220 S2					Gardens Extender				
Gardens Eclipse S1					Green Garden Beau 1149 S2				
Green Garden Leah 7B2 S1					# Emulation N Bar 5522				
12779238 Green Garden Leah 5289 S2					Green Garden Sidney 3105 S1				
					# N Bar Emulation EXT				
					Green Garden Leah 9238 S2				
BW 79	205 day wt. 661		Rat: 100		365 day wt. 1141		Rat: 102		
Adj. Ht. 51.5	Adj. SC 35.0		Dam's PR: 3 WR 101		2 YR 100		Age 4 Wt. 1230		

75**Gardens Highmark BB14 S1**

03/14/01		Bull		13843586		BB14			
Birth	Wean	Milk	Year	Scrotal	IMF	Rea	Fat	% RP	
EPD	+0.5	+20	+14	+50	+40	+22	+0.05	+0.006	-0.010
#Pathfinder									
Summitcrest Scotch Cap 0B45					# Scotch Cap				
Gardens Highmark					# Summitcrest Heiress 0T09				
13047487 Green Garden Pride 6128 S1					N Bar Emulation EXT				
Gardens Transition 7205 S1					Green Garden Pride 4128 S1				
Green Garden Ellie 6B7 S1					# Traveler 1148 G D A R				
12555966 Green Garden Pridelia 84751					N Bar Clova Pride 2264				
					# V D A R Power Play 91				
					Green Garden Pridelia 13C				
BW 77	205 day wt. 604		Rat: 91		365 day wt. 1038		Rat: 93		
Adj. Ht. 49.9	Adj. SC 41.0		Dam's PR: 3 WR 92		2 YR 94		Age 5 Wt. 1350		

78**Gardens Bravo B75 S2**

03/10/01		Bull		13843602		B75			
Birth	Wean	Milk	Year	Scrotal	IMF	Rea	Fat	% RP	
EPD	+1.6	+27	+18	+59	+1.1	+1.5	+1.21	+0.002	+1.50
#Pathfinder									
# G T Expo					# Scotch Cap				
Gardens Bravo					# GT Pine Siskin				
13084451 Green Garden Beau 6220 S2					Gardens Extender				
Gardens Transition 7205 S1					Green Garden Beau 1149 S2				
Green Garden Pride 574 S1					# Traveler 1148 G D A R				
12320349 Green Garden Pride 274 S1					N Bar Clova Pride 2264				
					# N Bar Emulation EXT				
					Green Garden Pride 776 S1				
BW 85	205 day wt. 690		Rat: 104		365 day wt. 1128		Rat: 101		
Adj. Ht. 50.7	Adj. SC 38.0		Dam's PR: 4 WR 107		4 YR 107		Age 6 Wt. 1405		

**Gardens Bravo B15 S2****79****Gardens Bravo B033 S2**

03/17/01		Bull		13843607		B033			
Birth	Wean	Milk	Year	Scrotal	IMF	Rea	Fat	% RP	
EPD	+2.4	+27	+18	+53	-0.4	+2.8	+1.16	-0.006	+2.30
#Pathfinder									
# G T Expo					# Scotch Cap				
Gardens Bravo					# GT Pine Siskin				
13084451 Green Garden Beau 6220 S2					Gardens Extender				
Summitcrest Scotch Cap 0B45					Green Garden Beau 1149 S2				
Green Garden Lass 8030 S2					# Scotch Cap				
13047466 Green Garden Lass					# Summitcrest Heiress 0T09				
					# S A Direct Drive 83				
					Leachman Band Lass 9525				
BW 82	205 day wt. 688		Rat: 104		365 day wt. 1080		Rat: 97		
Adj. Ht. 51.0	Adj. SC 35.0		Dam's PR: 2 WR 107		2 YR 104		Age 3 Wt. 1230		

76**Gardens Bravo B15 S2**

03/07/01		Bull		13843601		B15			
Birth	Wean	Milk	Year	Scrotal	IMF	Rea	Fat	% RP	
EPD	+2.8	+34	+16	+67	+1.1	+1.5	+2.6	+0.001	+2.80
#Pathfinder									
# G T Expo					# Scotch Cap				
Gardens Bravo					# GT Pine Siskin				
13084451 Green Garden Beau 6220 S2					Gardens Extender				
Gardens Transition 7205 S1					Green Garden Beau 1149 S2				
Green Garden Jilt 5206 S1					# Traveler 1148 G D A R				
12320306 Green Garden Jilt 3207 S1					N Bar Clova Pride 2264				
					# N Bar Emulation EXT				
					Green Garden Jilt 111 S1				
BW 89	205 day wt. 718		Rat: 108		365 day wt. 1249		Rat: 111		
Adj. Ht. 52.6	Adj. SC 37.0		Dam's PR: 3 WR 105		4 YR 104		Age 6 Wt. 1370		

80**Gardens Bravo B100 S2**

03/30/01		Bull		13843611		B100			
Birth	Wean	Milk	Year	Scrotal	IMF	Rea	Fat	% RP	
EPD	+1.6	+27	+14	+56	+2.1	+1.5	+2.24	+0.002	+2.50
#Pathfinder									
# G T Expo					# Scotch Cap				
Gardens Bravo					# GT Pine Siskin				
13084451 Green Garden Beau 6220 S2					Gardens Extender				
Gardens Transition 7205 S1					Green Garden Beau 1149 S2				
Green Garden Tara 729 S1					# Traveler 1148 G D A R				
12972941 B A F Captains Queen D1002					N Bar Clova Pride 2264				
					# Rito Excel 809				
					K W Rito 449 5177				
BW 81	205 day wt. 659		Rat: 100		365 day wt. 1030		Rat: 92		
Adj. Ht. 50.4	Adj. SC 37.0		Dam's PR: 3 WR 101		2 YR 96		Age 4 Wt. 1270		

81 Gardens EXT B028 S1 (ET)

03/19/01		Bull		13844986		B028			
Birth	Wean	Milk	Year	Scrotal	IMF	Rea	Fat	% RP	
EPD +1.1	+34	+21	+67	-.20	+.03	+.10	+0.24	-.140	
#Pathfinder					# Emulation 31				
# Emulation N Bar 5522					Ankony 8F78 Lass 8F275				
#N Bar Emulation EXT					# Emulation 31				
10776479 N Bar Primrose 2424					Primrose N Bar 9962				
# Lemmon Impact					# Black Witch Corbinaire 95				
# Green Garden Bonnie 1134 S1					# Lemmon Elga 3020				
11652661 # Green Garden Bonnie 930 S1					# S S Rito 0715 0H3				
					Green Garden Bonnie 7133 C				

BW 68	205 day wt. 709	Rat: 106	365 day wt. 1086	Rat: 100
Adj. Ht. 50.5	Adj. SC 37.0	Dam's PR: 6 WR 105 7 YR 108		Age 10 Wt. 1250

Lot 81 is a full brother to Gardens EXT 4137 (Ref. Sire C). His dam is currently a donor cow at Whitestone Farms in Virginia.

82 Gardens Prime Time B81 S1

01/25/01		Bull		13843507		B81			
Birth	Wean	Milk	Year	Scrotal	IMF	Rea	Fat	% RP	
EPD -0.7	+33	+20	+56	+.22	+.10	+.19	+0.06	+.130	
#Pathfinder					# R R Traveler 5204				
Gardens Prime Time					# Green Garden Susie 1246 S1				
Gardens Prime Time 861 S1					# N Bar Emulation EXT				
13187346 Green Garden Lucy 660 S1					Green Garden Lucy 475 S2				
# N Bar Emulation EXT					# Emulation N Bar 5522				
Green Garden Eileen 881 S1					N Bar Primrose 2424				
13167886 # Green Garden Eileen 082 S1					# Lemmon Impact				
					Green Garden Eileen 682 C				

BW 70	205 day wt. 712	Rat: 108	365 day wt. 1099	Rat: 99
Adj. Ht. 49.5	Adj. SC 41.0	Dam's PR: 1 WR 108 1 YR 99		Age 3 Wt. 1235

83 Gardens Highmark A143 S1

11/14/00		Bull		13818737		A143			
Birth	Wean	Milk	Year	Scrotal	IMF	Rea	Fat	% RP	
EPD +2.3	+31	+21	+64	+4.0	+3.2	+1.5	+0.03	+.130	
#Pathfinder					# Scotch Cap				
Summitcrest Scotch Cap 0B45					# Summitcrest Heiress 0T09				
Gardens Highmark					# N Bar Emulation EXT				
13047487 Green Garden Pride 6128 S1					Green Garden Pride 4128 S1				
# G T Expo					# Scotch Cap				
Green Garden Bonnie 8134 S1					# GT Pine Siskin				
13084450 Green Garden Bonnie 812 S1					Gardens Prime Time				
					Green Garden Bonnie 9131 S1				

BW 77	205 day wt. 660	Rat: 100	365 day wt. 1072	Rat: 100
Adj. Ht. 50.0	Adj. SC 37.2	Dam's PR: 1 WR 100 1 YR 100		Age 2 Wt. 1280

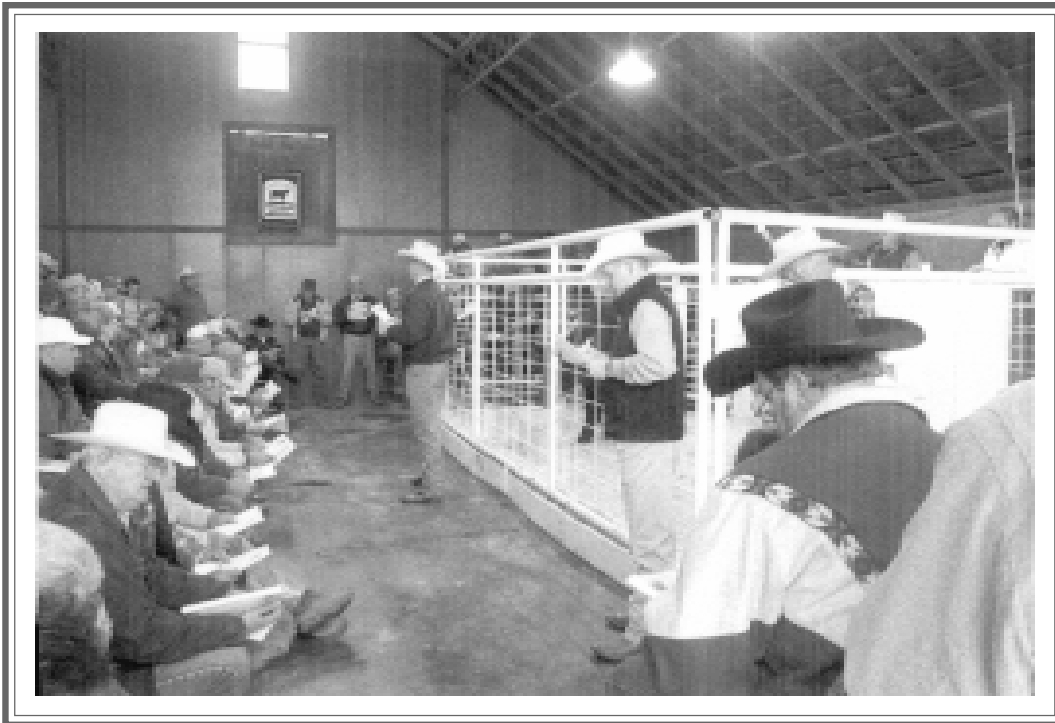
Highmark A143 (LOT 83) has a freeze brand of A134 and has been running with a pen of yearling bull this past 3 months.

84 Gardens SST B07 S1 (ET)

02/26/01		Bull		13924019		B07			
Birth	Wean	Milk	Year	Scrotal	IMF	Rea	Fat	% RP	
EPD -0.5	+31	+17	+63	+3.4	+2.3	+0.1	-.008	+.01	
#Pathfinder					# Q A S Traveler 23-4				
# D H D Traveler 6807					# Bemindful Maid D H D 0807				
SS Traveler 6807 T510					Hoff Hi Spade S C 491				
12502030 # S S Miss Hi Spade A114					S S Miss Rito 0H3 5H9				
# Gardens Transition 7205 S1					# Traveler 1148 G D A R				
# Green Garden Jilt 518 S2					N Bar Clova Pride 2264				
12320303 # Green Garden Jilt 120 S1					# Lemmon Impact				
					Green Garden Jilt 520 C				

BW 77	205 day wt. 575	Rat: 100	365 day wt. 1060	Rat: 100
Adj. Ht. 50.2	Adj. SC 39.0	Dam's PR: 4 Wr 105 4 YR 105		Age 6 Wt. 1275

As many of you know, we collect several of the bulls at a year of age. We then use this semen in test herds, to help in our data collection. This year we will be retaining a 1/3 semen revenue sharing interest on all the bulls selling. In most instances, we will not exercise our semen option, but if for some reason we would like to collect the bull you purchase, we do it at our cost and your convenience.





Green Garden Bonnie B267 S1

85 Green Garden Bonnie B267 S1

		03/15/01 Cow			13844987			B267		
	EPD	Birth	Wean	Milk	Year	Scrotal	IMF	Rea	Fat	%RP
		+1.1	+34	+21	+67	-.20	+0.3	+1.0	+0.24	-.140

#Pathfinder
 #Emulation N Bar 5522
 #N Bar Emulation EXT 10776479
 N Bar Primrose 2424
 #Green Garden Bonnie 1134 S1 11652661
 #Green Garden Bonnie 930 S1
 #Emulation 31
 Ankony 8F78 Lass 8F275
 #Emulation 31
 Primrose N Bar 9962
 #Black Witch Corbinaire 95
 #Lemmon Impact
 #S S Rito 0715 OH3
 Green Garden Bonnie 7133C

Birth 70 Wean 591 Rat. 100 Year 850 Rat: 100 Calfhood Vaccinated and open

Lot 85 is a full sister to Gardens EXT 4137 (Ref. Sire C) She also has a full sister that is the dam of the high indexing heifer in our 2001 Spring calf crop. Dam's PR: 6 WR 105 7 YR 108



Green Garden Pride B253 S1

Lot 86 ranks in the top 1% of the breed for %IMF along with super calving ease and growth.

86 Green Garden Pride B253 S1

		03/08/01 Cow			13843539			B253		
	EPD	Birth	Wean	Milk	Year	Scrotal	IMF	Rea	Fat	%RP
		-0.5	+33	+18	+71	+3.6	+3.5	+0.8	+0.09	-0.070

#Pathfinder
 #D H D Traveler 6807
 S S Traveler 6807 T510 12502030
 #S S Miss Hi Spade A114
 Gardens Prime Time
 Green Garden Pride 9250 S2 13312806
 Green Garden Pride 100 S2
 #Q A S Traveler 23-4
 #Bemindful Maid D H D 0807
 Hoff Hi Spade S C 491
 S S Miss Rito 0H3 5H9
 #R R Traveler 5204
 #Green Garden Susie 1246 S1
 Summitcrest Perfection
 B A F Captains Pride 1730

Birth 62 Wean 598 Rat. 99 Year 905 Rat: 103

Dam's PR: 1 WR 99 1 YR 103 Calfhood Vaccinated and open

87 Green Garden Emma B122 S1

		03/17/01 Cow			13843587			B122		
	EPD	Birth	Wean	Milk	Year	Scrotal	IMF	Rea	Fat	%RP
		+2.5	+34	+16	+69	+1.6	+1.7	+1.2	+0.08	+0.030

#Pathfinder
 Gardens Highmark 13047487
 Green Garden Emma 7122 S1 12784429
 Summitcrest Scotch Cap OB45
 Green Garden Pride 6128 S1
 #N Bar Emulation EXT
 Green Garden Emma 1122 S1
 #Scotch Cap
 #Summitcrest Heiress 0T09
 #N Bar Emulation EXT
 Green Garden Pride 4128 S1
 #Emulation N Bar 5522
 N Bar Primrose 2424
 #Schurrtop Fortune 3261
 Green Garden Emma 7394C

Birth 81 Wean 589 Rat. 97 Year 959 Rat: 109

Dam's PR: 3 WR 99 3 YR 104 Calfhood Vaccinated and open

88 Green Garden Jilt B044 S1

		03/09/01 Cow			13843580			B044		
	EPD	Birth	Wean	Milk	Year	Scrotal	IMF	Rea	Fat	%RP
		+2.3	+34	+16	+62	+3.4	+2.5	+1.3	+0.08	+0.030

#Pathfinder
 Gardens Highmark 13047487
 Green Garden Jilt 8040 S1 13124109
 Summitcrest Scotch Cap OB45
 Green Garden Pride 6128 S1
 Gardens Opto 6071
 Green Garden Jilt 319 S1
 #Scotch Cap
 #Summitcrest Heiress 0T09
 N Bar Emulation EXT
 Green Garden Pride 4128 S1
 Gardens Extender
 Green Garden Rita 227 S2
 Gardens Band 1015 S1
 Green Garden Jilt 021 S1

Birth 81 Wean 655 Rat: 107 Year 909 Rat: 103

Dam's PR: 1 WR 107 1 YR 103 Calfhood Vaccinated and open

89 Green Garden Barbara B152 S2

		03/31/01 Cow			13843612			B152		
	EPD	Birth	Wean	Milk	Year	Scrotal	IMF	Rea	Fat	%RP
		+2.3	+29	+16	+57	+3.1	+1.4	+2.1	-.001	+1.90

#Pathfinder
 Gardens Bravo 13084451
 Green Garden Barbara 7151 S2 12910060
 #G T Expo
 Green Garden Beau 6220 S2
 Gardens EXT 4137 S2
 #Green Garden Barbara 0150 S1 B A F Excel Lady 1809
 #Scotch Cap
 #GT Pine Siskin
 Gardens Extender
 Green Garden Beau 1149 S2
 #N Bar Emulation EXT
 #Green Garden Bonnie 1134 S1
 #Lemmon Impact

Birth 77 Wean 623 Rat. 102 Year 873 Rat: 99

Dam's PR: 3 WR 103 2 YR 104 Calfhood Vaccinated and open

90 Green Garden Estelle B023 S1

		03/16/01 Cow			14042703			B023		
	EPD	Birth	Wean	Milk	Year	Scrotal	IMF	Rea	Fat	%RP
		+1.7	+28	+20	+52	-.24	+1.5	+0.8	-.006	+1.130

#Pathfinder
 Gardens Bravo 13084451
 Green Garden Estelle 672 S1 12635583
 #G T Expo
 Green Garden Beau 6220 S2
 #G A R Sleep Easy 1009
 Green Garden Estelle 452 S2
 #Scotch Cap
 #GT Pine Siskin
 #Gardens Extender
 Green Garden Beau 1149 S2
 #Tehama Bando 155
 Blacklass G A R 103
 Gardens Transition 7205 S1
 Summitcrest Estelle Y115

BW 76 205 day wt. 644 Rat: 106 365 day wt. 836 Rat: 95

Dam's PR: 4 WR 107 3 YR 102 Calfhood Vaccinated and open

The cows that sell:

Many years ago, a good friend of mine and I were discussing trait selections in breeding cattle and he related to me the following story. He and his grandfather were out looking for a horse to buy and found one that was very pigeon-toed. He told his grandfather he could buy that horse and breed it to one at home that's feet that splayed out and then he would have a colt that would be straight. His grandfather told him that he better be looking for a horse that had good feet because "if you don't breed it in you don't have to breed it out".

Keeping this in mind, we have spent many hours in studying sire summaries, field data, along with data produced at Green Garden. Our goal being to produce females that have the genetic base to produce trouble free, functional seedstock that won't have traits that need to be bred out.

This will be the largest offering of females we have ever had in our production sale. The genetics available today will also combine the efforts of 12 years of using ultrasound data as one of the selection tools in improving our cow herd to produce cattle that calve easy, grow rapidly to market weight, and hang up a superior product on the rail.

By the way, this good friend of mine is John Ficken and his Grandfather, Howard was a good friend of my Dad's.



Green Garden Jilt A214 S1

93 Green Garden Lass A031 S2

04/03/00		Cow				13604385		A031	
Birth	Wean	Milk	Year	Scrotal	IMF	Rea	Fat	% RP	
EPD +3.2	+32	+16	+60	+1.6	+2.0	+1.9	+0.04	+0.070	
#Pathfinder									
Summitcrest Scotch Cap 0B45					# Scotch Cap				
Gardens Highmark					# Summitcrest Heiress 0T09				
13047487 Green Garden Pride 6128 S1					N Bar Emulation EXT				
					Green Garden Pride 4128 S1				
					# N Bar Emulation EXT				
Gardens Extender					Summitcrest Estelle Y115				
Green Garden Lass 6030 S2					# S A Direct Drive 83				
12634588 Green Garden Lass					Leachman Band Lass 9525				

BW 83	WW 607	Rat: 104	YW NA	Dam's PR: 4 WR 100	1 YR 93
Bull calf at side, born 2-16-01, BW 76 lbs. Sire: SS Traveler 6807 T510 (Ref. Sire D)					

91 Green Garden Jilt A214 S1

03/01/00		Cow				13604349		A214	
Birth	Wean	Milk	Year	Scrotal	IMF	Rea	Fat	% RP	
EPD +1.4	+34	+18	+65	-.03	+1.9	+0.03	+0.010	-0.040	
#Pathfinder									
Summitcrest Scotch Cap 0B45					# Scotch Cap				
Gardens Highmark					# Summitcrest Heiress 0T09				
13047487 Green Garden Pride 6128 S1					# N Bar Emulation EXT				
					Green Garden Pride 4128 S1				
					# Emulation N Bar 5522				
# N Bar Emulation EXT					N Bar Primrose 2424				
Green Garden Jilt 5213 S1					# Hoff Hi Spade S C 491				
12320309 Green Garden Jilt 1213 S2					# Green Garden Jilt 612C				

BW 71	WW 586	Rat: 100	YR 749	Rat: 98	Dam's PR: 4 WR 104	3 YR 103
Heifer calf at side, born 2-18-01, BW 73 lbs. Sire: SS Traveler 6807 T510 (Ref. Sire D)						

94 Green Garden Bonnie A136 S1

03/16/00		Cow				13604362		A136	
Birth	Wean	Milk	Year	Scrotal	IMF	Rea	Fat	% RP	
EPD +1.6	+35	+19	+67	+1.8	+1.3	+1.2	+0.003	+0.040	
#Pathfinder									
Summitcrest Scotch Cap 0B45					# Scotch Cap				
Gardens Highmark					# Summitcrest Heiress 0T09				
13047487 Green Garden Pride 6128 S1					# N Bar Emulation EXT				
					Green Garden Pride 4128 S1				
					# Emulation N Bar 5522				
# N Bar Emulation EXT					N Bar Primrose 2424				
Green Garden Bonnie 7136 S1					# Lemmon Impact				
12784434 Green Garden Bonnie 1133 S1					Green Garden Bonnie 2132 C				

BW 71	WW 627	Rat: 108	YW 819	Rat: 108	Dam's PR: 2 WR 103	2 YR 102
Heifer calf at side, born 2-14-02, BW 73 lbs. Sire: SS Traveler 6807 T510 (Ref. Sire D)						

92 Green Garden Pride A73 S1

01/27/00		Cow				13604307		A73	
Birth	Wean	Milk	Year	Scrotal	IMF	Rea	Fat	% RP	
EPD +0.5	+24	+17	+54	+6.8	+0.7	+0.06	+0.006	-0.160	
#Pathfinder									
# R R Traveler 5204					# Q A S Traveler 23-4				
Gardens Prime Time					Eriskay of Rollin Rock 3302				
12007667 #Green Garden Susie 1246 S1					Gardens Transition 7205 S1				
					Green Garden Susie 9118 S2				
					# Scotch Cap				
Summitcrest Scotch Cap 0B45					# Summitcrest Heiress 0T09				
Green Garden Pride 773 S1					# Schurrtop Fortune 3261				
12851228 Green Garden Pride 074 S1					Green Garden Pride 776 S1				

BW 74	WW 533	Rat: 91	YW 701	Rat: 91	Dam's PR: 2 WR 91	2 YR 91
Heifer calf at side, born 2-12-01, BW 68 lbs. Sire: SS Traveler 6807 T510 (Ref. Sire D)						

95 Green Garden Bonnie A133 S1

03/20/00		Cow				13604372		A133	
Birth	Wean	Milk	Year	Scrotal	IMF	Rea	Fat	% RP	
EPD +1.7	+24	+19	+64	+4.1	+2.7	+1.1	-0.005	+0.190	
#Pathfinder									
Summitcrest Scotch Cap 0B45					# Scotch Cap				
Gardens Highmark					# Summitcrest Heiress 0T09				
13047487 Green Garden Pride 6128 S1					# N Bar Emulation EXT				
					Green Garden Pride 4128 S1				
					# R R Traveler 5204				
Gardens Prime Time					# Green Garden Susie 1246 S1				
Green Garden Bonnie 810 S1					# N Bar Emulation EXT				
12540840 Green Garden Bonnie 9131 S1					Green Garden Bonnie 7133 C				

BW 74	WW 517	Rat: 89	YW 746	Rat: 98	Dam's PR: 4 WR 100	4 YR 104
AI 5-22-01 to T510, Ref. Sire D. Pastured with Bravo A37 (Ref. Sire M) from 6-1- to 8-22.						

96**Green Garden Beau A221 S2**

		03/29/00 Cow				13604380		A221		
EPD	Birth	Wean	Milk	Year	Scrotal	IMF	Rea	Fat	% RP	
	+2.3	+33	+15	+64	+28	+24	+1.3	+0.02	+120	
#Pathfinder										
Summitcrest Scotch Cap 0B45 Gardens Highmark 13047487 Green Garden Pride 6128 S1					# Scotch Cap # Summitcrest Heiress 0T09 N Bar Emulation EXT Green Garden Pride 4128 S1 # N Bar Emulation EXT Summitcrest Estelle Y115 # Scotch Cap Skyland BB Miss 114					
Gardens Extender Green Garden Beau 7220 S2 12784443 Green Garden Beau 1149 S2										
BW 75 WW 618 Rat: 106 YW 799 Rat: 105 Dam's PR: 3 WR 101 2 YR 104										
Pastured with Gardens Bravo A37 (Ref. Sire M) from 6-1 to 8-22.										

100**Green Garden Courtney A024 S**

		04/06/00 Cow				13604387		A024		
EPD	Birth	Wean	Milk	Year	Scrotal	IMF	Rea	Fat	% RP	
	+3.1	+26	+13	+51	-0.6	+1.7	+0	-0.05	-120	
#Pathfinder										
Summitcrest Scotch Cap 0B45 Gardens Highmark 13047487 Green Garden Pride 6128 S1					# Scotch Cap # Summitcrest Heiress 0T09 # N Bar Emulation EXT Green Garden Pride 4128 S1 # Pine Drive Big Sky Prim Lassie S A 440 # Loma Lanes Cracker Jack 12J #Queen Mother					
# S A Direct Drive 83 #Sandy Mother M M 0342 11493436 Queen Mother 342										
BW 77 WW 568 Rat: 97 YW N/A Dam's PR: 10 WR 104 8 YR 101										
Pastured with Gardens Bravo A37 (Ref. Sire M) from 6-1 to 8-22.										

97**Green Garden Poppy A092 S1**

		03/25/00 Cow				13604378		A092		
EPD	Birth	Wean	Milk	Year	Scrotal	IMF	Rea	Fat	% RP	
	+0.5	+28	+16	+54	+16	+22	+0	+0.04	-050	
#Pathfinder										
Summitcrest Scotch Cap 0B45 Gardens Highmark 13047487 Green Garden Pride 6128 S1					# Scotch Cap # Summitcrest Heiress 0T09 N Bar Emulation EXT Green Garden Pride 4128 S1 # N Bar Emulation EXT Summitcrest Estelle Y115 # S A Direct Drive 83 Green Garden Poppy 1948 S1					
Gardens Extender Green Garden Poppy 6091 S1 12555913 Green Garden Poppy 309 S2										
BW 64 WW 549 Rat: 94 YW 717 Rat: 94 Dam's PR: 4 WR 96 3 YR 96										
Pastured with Gardens Bravo A37 (Ref. Sire M) from 6-1 to 8-22.										

101**Green Garden Tara A102 S1**

		03/17/00 Cow				13604365		A102		
EPD	Birth	Wean	Milk	Year	Scrotal	IMF	Rea	Fat	% RP	
	+1.9	+24	+11	+56	+21	+21	+0	-0.12	+230	
#Pathfinder										
# G T Expo Gardens Bravo 13084451 Green Garden Beau 6220 S2					# Scotch Cap # GT Pine Siskin Gardens Extender Green Garden Beau 1149 S2 # Traveler 1148 G D A R N Bar Clova Pride 2264 # Rito Excel 809 K W Rito 449 5177					
Gardens Transition 7205 S1 Green Garden Tara 7054 S1 12967238 B A F Captains Queen D1002										
BW 76 WW 521 Rat: 89 YW 719 Rat: 94 Dam's PR: 3 WR 89 2 YR 92										
Pastured with Gardens Bravo A37 (Ref. Sire M) from 6-1 to 8-22.										

98**Green Garden Eulaine A80 S1**

		03/06/00 Cow				13604355		A80		
EPD	Birth	Wean	Milk	Year	Scrotal	IMF	Rea	Fat	% RP	
	+6	+27	+16	+50	+08	+16	+0	+0.08	-140	
#Pathfinder										
Summitcrest Scotch Cap 0B45 Gardens Highmark 13047487 Green Garden Pride 6128 S1					# Scotch Cap # Summitcrest Heiress 0T09 # N Bar Emulation EXT Green Garden Pride 4128 S1 # Emulation N Bar 5522 N Bar Primrose 2424 Strong Pursuit #Green Garden Eulaine 68 C					
# N Bar Emulation EXT #Green Garden Eulaine 878 S1 11191744 Green Garden Eulaine 678C										
BW 71 WW 574 Rat: 99 YW 737 Rat: 97 Dam's PR: 11 WR 101 11 YR 98										
Pastured with Gardens Bravo A37 (Ref. Sire M) from 6-1 to 8-22.										

102**Green Garden Jilt A205 S2**

		04/10/00 Cow				13604388		A205		
EPD	Birth	Wean	Milk	Year	Scrotal	IMF	Rea	Fat	% RP	
	+2.5	+25	+11	+52	+22	+18	+18	-0.05	+310	
#Pathfinder										
# G T Expo Gardens Bravo 13084451 Green Garden Beau 6220 S2					# Scotch Cap # GT Pine Siskin Gardens Extender Green Garden Beau 1149 S2 # Traveler 1148 G D A R N Bar Clova Pride 2264 # Schurrtop Fortune 3261 Green Garden Jilt 74 C					
Gardens Transition 7205 S1 Green Garden Jilt 4207 S1 12166862 Green Garden Jilt 111 S1										
BW 81 WW 632 Rat: 100 YW N/A Dam's PR: 5 WR 94 4 YR 95										
Pastured with Gardens Bravo A37 (Ref. Sire M) from 6-1 to 8-22.										

Heifer calf at side, 3-5-02 BW 67 lbs. Sire Gardens Bravo**99****Green Garden Emma A121 S1**

		03/26/00 Cow				13604379		A121		
EPD	Birth	Wean	Milk	Year	Scrotal	IMF	Rea	Fat	% RP	
	+1.9	+36	+17	+69	+16	+24	+0	-0.04	+050	
#Pathfinder										
Summitcrest Scotch Cap 0B45 Gardens Highmark 13047487 Green Garden Pride 6128 S1					# Scotch Cap # Summitcrest Heiress 0T09 # N Bar Emulation EXT Green Garden Pride 4128 S1 # Emulation N Bar 5522 N Bar Primrose 2424 # Schurrtop Fortune 3261 Green Garden Emma 7394 C					
# N Bar Emulation EXT Green Garden Emma 5124 S1 12320288 Green Garden Emma 0122 S1										
BW 77 WW 581 Rat: 100 YW 749 Rat: 98 Dam's PR: 4 WR 104 3 YR 102										
Pastured with Gardens Bravo A37 (Ref. Sire M) from 6-1 to 8-22.										

103**Green Garden Eulaine A241 S1**

		03/31/00 Cow				13604383		A241		
EPD	Birth	Wean	Milk	Year	Scrotal	IMF	Rea	Fat	% RP	
	-0.3	+27	+17	+46	-23	+06	+19	+0.13	+190	
#Pathfinder										
Gardens Transition 7205 S1 Gardens Transition 480 S1 12166834 # Green Garden Eulaine 878 S1					# Traveler 1148 G D A R N Bar Clova Pride 2264 # N Bar Emulation EXT Green Garden Eulaine 678C # Emulation N Bar 5522 N Bar Primrose 2424 Strong Pursuit Green Garden Eulaine 67 C					
# N Bar Emulation EXT #Green Garden Eulaine 896 S2 11191756 Green Garden Eulaine 690C										
BW 74 WW 575 Rat: 99 YW N/A Dam's PR: 11 WR 104 9 YR 104										
Pastured with Gardens Bravo A37 (Ref. Sire M) from 6-1 to 8-22.										

104 Green Garden Beau A035 S1

		03/23/00 Cow			13604377 A035					
	Birth	Wean	Milk	Year	Scrotal	IMF	Rea	Fat	% RP	
EPD	-0.6	+26	+13	+40	-.09	+12	+06	+006	+0	
#Pathfinder					# Traveler 1148 G D A R N Bar Clova Pride 2264 N Bar Emulation EXT Green Garden Eulaine 678C # Band 234 of Ideal 3163 Shoshone Lucy E C A 29 # Shoshone Viking GD60 Skyland B B Miss 83					
Gardens Transition 7205 S1 Gardens Transition 480 S1 12166834 # Green Garden Eulaine 878 S1 Gardens Band 91 S1 Green Garden Beau 351 S2 11652682 Skyland BB Miss 35										

BW 76 WW 630 Rat: 109 YW 825 Rat: 109 Dam's PR: 4 WR 103 2 YR 102

Pastured with Gardens Bravo A37 (Ref. Sire M) from 6-1 to 8-22.

108 Green Garden Jilt A041 S1

		05/02/00 Cow			13604398 A041					
	Birth	Wean	Milk	Year	Scrotal	IMF	Rea	Fat	% RP	
EPD	-2.8	+23	+18	+45	+23	+07	+0	-001	-200	
#Pathfinder					# Traveler 1148 G D A R N Bar Clova Pride 2264 N Bar Emulation EXT Green Garden Eulaine 678C # R R Traveler 5204 # Green Garden Susie 1246 S1 Gardens Band 1015 S1 Green Garden Jilt 021 S1					
Gardens Transition 7205 S1 Gardens Transition 480 S1 12166834 # Green Garden Eulaine 878 S1 Gardens Prime Time Green Garden Jilt 5040 S1 12320264 Green Garden Jilt 319 S1										

BW 62 WW 556 Rat: 95 YW N/A Dam's PR: 2 WR 104 2 YR 103

Bred AI to T510 (Ref. Sire D) 6-6-01. Pastured with Bravo A37 (Ref. Sire M) from 6-15 to 8-22.

105 Green Garden Allie A89 S1

		03/16/00 Cow			13604363 A89					
	Birth	Wean	Milk	Year	Scrotal	IMF	Rea	Fat	% RP	
EPD	+0.7	+30	+15	+51	+09	+02	+0	-005	+170	
#Pathfinder					# Traveler 1148 G D A R N Bar Clova Pride 2264 N Bar Emulation EXT Green Garden Eulaine 678C # Scotch Cap # Summitcrest Heiress 0T09 Summitcrest Alloy Z087 Summitcrest Allison 0219					
Gardens Transition 7205 S1 Gardens Transition 480 S1 12166834 # Green Garden Eulaine 878 S1 Summitcrest Scotch Cap 0B45 Summitcrest Allison 3G62 12880451 Summitcrest Allison 3C36										

BW 74 WW 582 Rat: 100 YW 715 Rat: 94 Dam's PR: 2 WR 99 2 YR 101

Pastured with Gardens Bravo A37 (Ref. Sire M) from 6-1 to 8-22.

109 Green Garden Blkbd 917 S1

		11/22/99 Cow			13456539 917					
	Birth	Wean	Milk	Year	Scrotal	IMF	Rea	Fat	% RP	
EPD	+3.0	+30	+16	+61	+02	+32	+04	+008	-200	
#Pathfinder					# Scotch Cap Summitcrest Mamie T009 Emulation N Bar 5522 B B Hillsdale Natoma 046 # S A Direct Drive 83 Leachman Band Lass 9525 # Band 234 of Ideal 3163 Blackbird Marolyn V A 148					
Summitcrest Perfection H A F Progression 37 12902960 Hillsdale Natoma 028 Gardens Director Green Garden Blkbd 416 S1 12693999 Blackbird of Valley 19										

BW 78 WW 476 Rat: 93 YW 814 Rat: 110 Dam's PR: 4 WR 102 4 YR 100

Bull calf at side born 2-12-01, BW 90 lbs. Sire: SS Traveler 6807 T5110 (Ref. Sire D)

106 Green Garden Rita A074 S1

		03/15/00 Cow			13604360 A074					
	Birth	Wean	Milk	Year	Scrotal	IMF	Rea	Fat	% RP	
EPD	-0.5	+26	+14	+45	-.15	+04	+0	-007	+130	
#Pathfinder					# Traveler 1148 G D A R N Bar Clova Pride 2264 N Bar Emulation EXT Green Garden Eulaine 678C # N Bar Emulation EXT Summitcrest Estelle Y115 # S A Direct Drive 83 # War Rito 9027 5105 7007					
Gardens Transition 7205 S1 Gardens Transition 480 S1 12166834 # Green Garden Eulaine 878 S1 Gardens Extender Green Garden Rita 629 12634591 Green Garden Rita 227 S2										

BW 72 WW 551 Rat: 95 YW 714 Rat: 94 Dam's PR: 4 WR 96 4 YR 100

Bred AI to SS Traveler 6807 T510 (Ref. Sire D) 5-21-01. Pastured with Bravo A37 6-1 to 8-22.

110 Green Garden Sophie 9263 S2

		11/13/99 Cow			13456535 9263					
	Birth	Wean	Milk	Year	Scrotal	IMF	Rea	Fat	% RP	
EPD	+4.8	+36	+19	+57	+32	+14	+0	-008	-010	
#Pathfinder					# Scotch Cap Summitcrest Mamie T009 Emulation N Bar 5522 B B Hillsdale Natoma 046 # Scotch Cap Summitcrest Mamie T009 # Rito Excel 809 Emulous Lady B A F 478					
Summitcrest Perfection H A F Progression 37 12902960 Hillsdale Natoma 028 Summitcrest Perfection # Green Garden Sophie 2256 S3 11918614 B A F Captains Lady D990										

BW 88 WW 519 Rat: 101 YW 644 Rat: 87 Dam's PR: 6 WR 109 5 YR 104

Bull calf at side born 2-24-02 sired by SS Traveler 6807 T510 (Ref. Sire D) BW 84 lbs.

107 Green Garden Eulaine A91 S1

		04/18/00 Cow			13604394 A91					
	Birth	Wean	Milk	Year	Scrotal	IMF	Rea	Fat	% RP	
EPD	+0.5	+32	+18	+55	-.07	-.04	+11	+011	+030	
#Pathfinder					# Traveler 1148 G D A R N Bar Clova Pride 2264 N Bar Emulation EXT Green Garden Eulaine 678C Gardens Transition 7205 S1 # F A F Erica D963 319 # N Bar Emulation EXT Green Garden Eulaine 990 S1					
Gardens Transition 7205 S1 Gardens Transition 480 S1 12166834 # Green Garden Eulaine 878 S1 F A F Plainsman 509 Green Garden Eulaine 890 S1 13127624 Green Garden Eulaine 590 S1										

BW 71 WW 620 Rat: 106 YW N/A Dam's PR: 2 WR 104 1 YR 106

Bull calf at side born 2-9-01, BW 79 lbs. Sire: SS Traveler 6807 T5110 (Ref. Sire D)

111 Green Garden Lady 9255 S1

		10/29/99 Cow			13456521 9255					
	Birth	Wean	Milk	Year	Scrotal	IMF	Rea	Fat	% RP	
EPD	+2.6	+35	+11	+59	+33	+09	+0	-005	-200	
#Pathfinder					# Scotch Cap Summitcrest Mamie T009 Emulation N Bar 5522 B B Hillsdale Natoma 046 # Traveler 1148 G D A R N Bar Clova Pride 2264 # Rito Excel 809 Emulous Lady B A F 478					
Summitcrest Perfection H A F Progression 37 12902960 Hillsdale Natoma 028 Gardens Transition 7205 S1 Green Garden Lady 4256 S2 12215573 B A F Captains Lady D990										

BW 76 WW 570 Rat: 104 YW 773 Rat: 102 Dam's PR: 4 WR 102 4 YR 100

Pastured with Gardens Bravo A37 (Ref. Sire M) from 6-1 to 8-22.

112 Green Garden Dinah 9261 S1

		11/28/99 Cow			13456528		9261		
EPD	Birth	Wean	Milk	Year	Scrotal	IMF	Rea	Fat	% RP
	+1.0	+40	+16	+75	+48	+27	+17	+0.20	-200
#Pathfinder									
# N Bar Emulation EXT Gardens EXT 4137 S2 12166857 # Green Garden Bonnie 1134 S1					# Emulation N Bar 5522 N Bar Primrose 2424 # Lemmon Impact # Green Garden Bonnie 930 S1 # Emulation N Bar 5522 N Bar Primrose 2424 # R&J Extra 893 B A F Wampum Excel 1985				
# N Bar Emulation EXT Garden Dinah 4262 S2 12215578 Green Garden Dinah 9262 S2									
BW 71 WW 483 Rat: 94 YW 696 Rat: 94 Dam's PR: 4 WR 102 4 YR 103									
Bred AI to SS Traveler 6807 T510 (Ref. Sire D) 6-5-01.									

116 Green Garden Bonnie 6141 S1

		02/15/96 Cow			12635249		6141		
EPD	Birth	Wean	Milk	Year	Scrotal	IMF	Rea	Fat	% RP
	+0.9	+30	+21	+63	+15	+0	+0	+0.13	-200
#Pathfinder									
# Q A S Traveler 23-4 # D H D Traveler 6807 10858958 # Bemindful Maid D H D 0807					# R R Traveler 5204 Green Garden Bonnie 4140 S1 12182076 Green Garden Bonnie 2134 S1				
# Band 234 of Ideal 3163 Q A S Blackbird Eve 601 1 # PBC 707 1M F0203 Bemindful Maid of R R 1079 # Q A S Traveler 23-4 Eriskay of Rollin Rock 3302 Gardens Transition 7205 S1 # Green Garden Bonnie 930 S1									
BW 72 WW 641 Rat: 107 YW 831 Rat: 102 PR: 4 WR 103 3 YR 109									
Bull calf at side born 2-14-02, BW 88 lbs. Sire: Gardens Bravo (Ref. Sire F)									

113 Green Garden Jilt 5213 S1

		02/21/95 Cow			12320309		5213		
EPD	Birth	Wean	Milk	Year	Scrotal	IMF	Rea	Fat	% RP
	+1.4	+39	+17	+68	-.01	+0	+12	+0.02	-030
#Pathfinder									
# Emulation N Bar 5522 # N Bar Emulation EXT 10776479 N Bar Primrose 2424					# Emulation 31 Ankony 8F78 Lass 8F275 # Emulation 31 Primrose N Bar 9962 # R&J Spade 1204 # Hoff Miss Scotch Cap 074 # Rito 939 of B156 7T26 Green Garden Jilt 211 C				
# Hoff Hi Spade S C 491 Green Garden Jilt 1213 S2 11670468 # Green Garden Jilt 612C									
BW 76 WW 623 Rat: 109 YW 810 Rat: 101 PR: 4 WR 104 4 YR 99									
Bred AI to SS Traveler T510 (Ref. Sire D) 5-17-01. Pastured with Highmark 6-1 to 8-22.									

117 Green Garden Eulaine 3296 S2

		02/04/93 Cow			12007648		3296		
EPD	Birth	Wean	Milk	Year	Scrotal	IMF	Rea	Fat	% RP
	+0.3	+32	+15	+59	+15	-.03	+0	+0	-.040
#Pathfinder									
# Emulation N Bar 5522 # N Bar Emulation EXT 10776479 N Bar Primrose 2424					Strong Pursuit Green Garden Eulaine 690C 10876104 Green Garden Eulaine 67 C				
# Emulation 31 Ankony 8F78 Lass 8F275 Emulation 31 Primrose N Bar 9962 # P S Power Play Schearbrook Blackcap N094 Blackman of A L F 51D Green Garden Eulaine C 59									
BW 76 WW 644 Rat: 107 YW 838 Rat: 104 PR: 7 WR 99 7 YR 101									
Bred AI to SS Traveler 6807 T510 (Ref. Sire D) 6-5-01. Pastured with Highmark 6-20 to 8-22. This is a full sister to Gardens Highlight currently being used at the Light Ranch in Turpin, OK.									

114 Green Garden Tara 003 S2

		03/03/96 Cow			12570242		F003		
EPD	Birth	Wean	Milk	Year	Scrotal	IMF	Rea	Fat	% RP
	+2.8	+36	+11	+71	-1.5	-1.1	+0	-0.03	-020
#Pathfinder									
# Emulation N Bar 5522 # N Bar Emulation EXT 10776479 N Bar Primrose 2424					# Emulation 31 Ankony 8F78 Lass 8F275 # Emulation 31 Primrose N Bar 9962 PBC 707 1M E0046 PBC 707 1F E0060 # Cherry Creek Rito 149 449 G MS C C Juanada 5177				
# Rito Excel 809 B A F Captains Queen D1002 10293730 K W Rito 449 5177									
BW 84 WW 617 Rat: 100 YW N/A PR: 2 WR 97 1 YR 104									
Pastured with Gardens Highmark (Ref. Sire E) from 5-28 to 8-22.									

118 Green Garden Eulima 4265 S2

		03/06/94 Cow			12166875		4265		
EPD	Birth	Wean	Milk	Year	Scrotal	IMF	Rea	Fat	% RP
	+1.7	+35	+11	+58	-1.4	-.02	+0.08	-.006	-.010
#Pathfinder									
# Emulation N Bar 5522 # N Bar Emulation EXT 10776479 N Bar Primrose 2424					# Schurrtop Fortune 3261 Green Garden Eulima 9130 S2 11268180 Green Garden Eulima 32 C				
# Emulation 31 Ankony 8F78 Lass 8F275 # Emulation 31 Primrose N Bar 9962 # Schearbrook Fortune Schurrtop Queen 1322 Sir Wms Can Am Green Garden Eulima C13									
BW 79 WW 579 Rat: 98 YW 782 Rat: 94 PR: 4 WR 102 3 YR 100									
Bred AI to SS Traveler 6807 T510 (Ref. Sire D) 5-22-01. Pastured with Highmark 6-13 to 8-22.									

115 Green Garden Blossom 663 S1

		02/09/96 Cow			12555961		663		
EPD	Birth	Wean	Milk	Year	Scrotal	Marb.	Rea	Fat	% RP
	+2.3	+43	+21	+82	-.41	+.01	+.15	+.010	-.01
#Pathfinder									
# Emulation N Bar 5522 # N Bar Emulation EXT 10776479 N Bar Primrose 2424					# Emulation 31 Ankony 8F78 Lass 8F275 # Emulation 31 Primrose N Bar 9962 # Q A S Traveler 23-4 # Bemindful Maid D H D 0807 # Emulation N Bar 5522 Green Garden Blossom 659C				
# D H D Traveler 6807 # Green Garden Blossom 362 S1 12007708 # Green Garden Blossom 861 S1									
BW 74 WW 675 Rat: 112 YW 933 Rat: 114 PR: 2 WR 106 YR N/A									
Bred AI to SS Traveler 6807 T510 (Ref. Sire D) 5-16-01. Pastured with Highmark 6-1 to 8-22.									

119 Green Garden Bonnie 5137 S1

		02/15/95 Cow			12320299		5137		
EPD	Birth	Wean	Milk	Year	Scrotal	IMF	Rea	Fat	% RP
	+0.2	+23	+15	+58	+21	+0.04	+0.12	+0.009	-.020
#Pathfinder									
# Traveler 1148 G D A R Gardens Transition 7205 S1 11128214 N Bar Clova Pride 2264					# Lemmon Impact # Green Garden Bonnie 1134 S1 11652661 # Green Garden Bonnie 930 S1				
# Q A S Traveler 23-4 # Blackcap Forever 485 G D A R # Ankonian Dynamo Clova Pride N Bar 7352 # Black Witch Corbinaire 95 # Lemmon Elga 3020 # S S Rito 0715 0H3 Green Garden Bonnie 7133 C									
BW 76 WW 590 Rat: 103 YW 902 Rat: 113 PR: 3 WR 97 2 YR 104									
Pastured with Gardens OB45 9254 S1 (Ref. Sire N) 5-28 to 8-22									

120 Green Garden Tara 7054 S1

		02/26/97 Cow				12967238 7054			
EPD	Birth	Wean	Milk	Year	Scrotal	IMF	Rea	Fat	% RP
	+0.4	+25	+4	+55	+49	+01	-.04	-0.15	+0.80
#Pathfinder									
# Traveler 1148 G D A R Gardens Transition 7205 S1 11128214 N Bar Clova Pride 2264					# Q A S Traveler 23-4 # Blackcap Forever 485 G D A R # Ankonian Dynamo Clova Pride N Bar 7352 PBC 707 1M E0046 PBC 707 1F E0060 # Cherry Creek Rito 149 449 G MS C C Juanada 5177				
# Rito Excel 809 B A F Captains Queen D1002 10293730 K W Rito 449 5177									
BW 74 WW N/A W YW 851 Rat: 100 PR: 3 WR 86 3 YR 89 Wt. 1185									
Pastured with Gardens Highmark (Ref. Sire E) 5-28 to 8-22.									

124 Green Garden Delia 5050 S1

		01/31/95 Cow				12320271 5050			
EPD	Birth	Wean	Milk	Year	Scrotal	IMF	Rea	Fat	% RP
	+0.1	+22	+17	+53	-.10	-.02	+0.05	-.001	+0
#Pathfinder									
# R R Traveler 5204 Gardens Prime Time 12007667 # Green Garden Susie 1246 S1					# Q A S Traveler 23-4 Eriskay of Rollin Rock 3302 # Gardens Transition 7205 S1 Green Garden Susie 9118 S2 H&H Rito 0715 5457 # S S Miss Band 105 5816 V D A R Valiant Green Garden Pridelia 349 C				
# S S Rito 0715 0H3 Green Garden Pridelia 305 S1 12044042 Green Garden Pridelia 848 S2									
BW 60 WW 537 Rat: 93 YW 758 Rat: 94 PR: 5 WR 102 5 YR 104 Wt. 1190									
Bred AI 6-6-01 to SS Traveler T510 (Ref. Sire D) Pastured with Highmark (Ref. Sire F) 6-15 to 8-22.									

121 Green Garden Pride 4128 S1

		02/19/94 Cow				12166831 4128			
EPD	Birth	Wean	Milk	Year	Scrotal	IMF	Rea	Fat	% RP
	+0.3	+22	+10	+46	+41	+02	+03	+009	-030
#Pathfinder									
# Traveler 1148 G D A R Gardens Transition 7205 S1 11128214 N Bar Clova Pride 2264					# Q A S Traveler 23-4 # Blackcap Forever 485 G D A R # Ankonian Dynamo Clova Pride N Bar 7352 H&H Rito 0715 5457 # S S Miss Band 105 5816 # Ankonian Dynamo Clova Pride N Bar 7352				
# S S Rito 0715 0H3 Green Garden Pride 9128 S1 11332000 N Bar Clova Pride 2264									
BW 70 WW N/A YW 800 Rat: 100 PR: 4 WR 98 4 YR 97 Wt. 1340									
Bred AI 5-23-01 to SS Traveler T510 (Ref. Sire D) Pastured with Bravo (Ref. Sire F) 6-11 to 8-22.									

125 Green Garden Bonnie 810 S1

		03/16/95 Cow				12540840 810-C95			
EPD	Birth	Wean	Milk	Year	Scrotal	IMF	Rea	Fat	% RP
	+1.4	+26	+19	+67	-.52	+04	+01	-.008	+120
#Pathfinder									
# R R Traveler 5204 Gardens Prime Time 12007667 # Green Garden Susie 1246 S1					# Q A S Traveler 23-4 Eriskay of Rollin Rock 3302 # Gardens Transition 7205 S1 Green Garden Susie 9118 S2 # Emulation N Bar 5522 N Bar Primrose 2424 # Traveler 1148 G D A R Green Garden Bonnie 2132 C				
# N Bar Emulation EXT Green Garden Bonnie 9131 S1 11268842 Green Garden Bonnie 7133 C									
BW N/A 205 day wt. N/A 365 day wt. N/A PR: 4 WR 100 4 YR 104 Wt. 1215									
Pastured with Gardens OB45 9254 S1 (Ref. Sire N) 5-28 to 8-22									

122 Green Garden Lucy 503 S2

		03/01/95 Cow				12320261 503			
EPD	Birth	Wean	Milk	Year	Scrotal	IMF	Rea	Fat	% RP
	+0.4	+28	+7	+53	-.52	+10	+01	+002	+020
#Pathfinder									
# R R Traveler 5204 Gardens Prime Time 12007667 # Green Garden Susie 1246 S1					# Q A S Traveler 23-4 Eriskay of Rollin Rock 3302 Gardens Transition 7205 S1 Green Garden Susie 9118 S2 # P S Sasquatch 904 V D A R Betty 699 Bandoliermere G V 36B Shoshone Lucy CA29				
V D A R Valiant Green Garden Lucy 11 S1 11669842 Shoshone Lucy E C A 29									
BW 85 WW 609 Rat: 106 YW 836 Rat: 104 PR: 5 WR 94 5 YR 95 Wt. 1270									
Bred AI 5-22-01 to SS Traveler T510 (Ref. Sire D) Pastured with Bravo (Ref. Sire F) 6-11 to 8-22.									
Bull calf at side, 2-27-02 BW 70 lbs. Sire SS Traveler T510									

126 Green Garden Beau 7222 S2

		02/21/97 Cow				12851234 7222			
EPD	Birth	Wean	Milk	Year	Scrotal	Marb.	Rea	Fat	% RP
	+3.1	+32	+21	+62	+01	+41	+22	+010	+10
#Pathfinder									
# Scotch Cap Summitcrest Scotch Cap 0B45 11847053 # Summitcrest Heiress 0T09					# P S Power Play # Hoff Band 07 of S C 509 # Premier Independence K N Summitcrest Heiress 0R01 # Emulation N Bar 5522 N Bar Primrose 2424 # Scotch Cap Skyland BB Miss 114				
# N Bar Emulation EXT Green Garden Beau 3220 S2 12007676 Green Garden Beau 1149 S2									
BW 82 WW 647 Rat: 102 YW 876 Rat: 102 PR: 2 WR 104 1 YR 103 Wt. 1300									
Pastured with Gardens Bravo (Ref. Sire F) 5-31 to 8-22									

123 Green Garden Estelle 808 S1

		03/15/95 Cow				12540839 808			
EPD	Birth	Wean	Milk	Year	Scrotal	IMF	Rea	Fat	% RP
	+1.1	+23	+17	+54	-.10	+09	+07	+012	-030
#Pathfinder									
# R R Traveler 5204 Gardens Prime Time 12007667 # Green Garden Susie 1246 S1					# Q A S Traveler 23-4 Eriskay of Rollin Rock 3302 # Gardens Transition 7205 S1 Green Garden Susie 9118 S2 H&H Rito 0715 5457 # S S Miss Band 105 5816 # Premier Independence K N # Summitcrest Estelle U011				
# S S Rito 0715 0H3 Green Garden Estelle 329 S2 12054145 Summitcrest Estelle Y115									
BW N/A 205 day wt. N/A 365 day wt. N/A PR: 3 WR 99 3 YR 105 Wt. 1160									
Pastured with Gardens OB45 9254 S1 (Ref. Sire N) 6-13 to 8-22.									

127 Green Garden Sandy 7055 S2

		02/18/97 Cow				12851231 7055			
EPD	Birth	Wean	Milk	Year	Scrotal	IMF	Rea	Fat	% RP
	+3.3	+27	+22	+50	-.03	-.02	+26	-.001	+250
#Pathfinder									
# Scotch Cap Summitcrest Scotch Cap 0B45 11847053 # Summitcrest Heiress 0T09					# P S Power Play # Hoff Band 07 of S C 509 # Premier Independence K N Summitcrest Heiress 0R01 H&H Rito 0715 5457 # S S Miss Band 105 5816 # S A Direct Drive 83 T M Revolution Blackbird				
# S S Rito 0715 0H3 Green Garden Sandy 3021 S1 12044039 Sandys Revolution M M 091									
BW 87 WW 718 Rat: 114 YW 886 Rat: 104 PR: 3 WR 103 2 YR 104 Wt. 1450									
Bred AI 6-5-01 to SS Traveler T510 (Ref. Sire D) Pastured with Bravo (Ref. Sire F) 6-15 to 8-22.									

128 Green Garden Estelle 672 S1

03/13/96		Cow		12635583		672			
Birth	Wean	Milk	Year	Scrotal	IMF	Rea	Fat	% RP	
EPD +1.2	+27	+24	+50	-.14	+.02	+.02	-.012	-.200	
#Pathfinder									
# Tehama Bando 155					# Band 234 of Ideal 3163				
#G A R Sleep Easy 1009					Tehama Blackcap G373				
11356568 Blacklass G A R 103					Q A S Traveler 23-4				
					Blacklass G A R 481				
					# Traveler 1148 G D A R				
Gardens Transition 7205 S1					N Bar Clova Pride 2264				
Green Garden Estelle 452 S2					# Premier Independence K N				
12160401 Summitcrest Estelle Y115					# Summitcrest Estelle U011				
BW N/A 205 day wt. N/A 365 day wt. N/A PR: 4 WR 107 3 YR 102 Wt. 1230									
Pastured with Gardens Bravo (Ref. Sire F) 5-31 to 8-22									

132 Green Garden Courtney 8024 S

03/14/98		Cow		13047464		8024			
Birth	Wean	Milk	Year	Scrotal	IMF	Rea	Fat	% RP	
EPD +2.6	+28	+7	+45	-.12	-.01	+.14	-.008	-.070	
#Pathfinder									
Gardens Extender					# N Bar Emulation EXT				
Gardens Opto 6071					Summitcrest Estelle Y115				
12555908 Green Garden Rita 227 S2					# S A Direct Drive 83				
					# War Rito 9027 5105 7007				
					# Pine Drive Big Sky				
					Prim Lassie S A 440				
# S A Direct Drive 83					# Loma Lanes Cracker Jack 12J				
# Sandy Mother M M 0342					# Queen Mother				
11493436 Queen Mother 342									
BW 79 WW 626 Rat:1 04 YW 765 Rat: 100 PR: 2 WR 92 2 YR 93 Wt. 1215									
Pastured with Gardens OB45 9254 S1 (Ref. Sire N) 6-13 to 8-22									

129 Green Garden Ellie 6050 S1

02/27/96		Cow		12555903		6050			
Birth	Wean	Milk	Year	Scrotal	IMF	Rea	Fat	% RP	
EPD +2.8	+31	+12	+51	-.17	+.10	+0	-.012	-.200	
#Pathfinder									
# N Bar Emulation EXT					# Emulation N Bar 5522				
Gardens Extender					N Bar Primrose 2424				
12160396 Summitcrest Estelle Y115					# Premier Independence K N				
					# Summitcrest Estelle U011				
					H&H Rito 0715 5457				
# S S Rito 0715 0H3					# S S Miss Band 105 5816				
Green Garden Pridelia 305 S1					V D A R Valiant				
12044042 Green Garden Pridelia 848 S2					Green Garden Pridelia 349 C				
BW 82 WW 652 Rat: 109 YW 842 Rat: 104 PR: 4 WR 102 4 YR 102 Wt. 1280									
Bred AI 6-2-01 to SS Traveler T510 (Ref. Sire D) Pastured with Highmark (Ref. Sire F) 6-15 to 8-22									

133 Green Garden Eulaine 890 S1

01/27/98		Cow		13127624		890-C98			
Birth	Wean	Milk	Year	Scrotal	IMF	Rea	Fat	% RP	
EPD +3.4	+33	+17	+64	+.08	-.04	+.12	+.007	-.010	
#Pathfinder									
Gardens Transition 7205S1					# Traveler 1148 G D A R				
F A F Plainsman 509					N Bar Clova Pride 2264				
12448518 F A F Erica D963 319					# TC Dividend 963				
					F A F Erica s 820				
					# Emulation N Bar 5522				
# N Bar Emulation EXT					N Bar Primrose 2424				
Green Garden Eulaine 590 S1					# Schurrtop Fortune 3261				
12469034 Green Garden Eulaine 990 S1					Green Garden Eulaine 67 C				
BW N/A 205 day wt. N/A 365 day wt. N/A PR: 2 WR 104 1 YR 105 Wt. 1030									
Pastured with Gardens OB45 9254 S1 (Ref. Sire N) 6-1 to 8-22									

130 Green Garden Jilt 8040 S1

03/02/98		Cow		13124109		8040			
Birth	Wean	Milk	Year	Scrotal	IMF	Rea	Fat	% RP	
EPD +0.8	+31	+12	+52	+.33	+.08	+.08	+.002	+.040	
#Pathfinder									
Gardens Extender					# N Bar Emulation EXT				
Gardens Opto 6071					Summitcrest Estelle Y115				
12555908 Green Garden Rita 227 S2					S A Direct Drive 83				
					# War Rito 9027 5105 7007				
					Gardens Band 91 S1				
Gardens Band 1015 S1					Summitcrest Estelle Y115				
Green Garden Jilt 319 S1					Gardens Transition 7205 S1				
12007698 Green Garden Jilt 021 S1					# Green Garden Jilt 820 S1				
BW 76 WW 623 Rat: 103 YW 767 Rat: 100 PR: 1 WR 107 1 YR 103 Wt. 1300									
Pastured with Gardens OB45 9254 S1 (Ref. Sire N) 5-28 to 8-22									

134 Green Garden Barbie 404 S1

03/15/94		Cow		12166836		404			
Birth	Wean	Milk	Year	Scrotal	IMF	Rea	Fat	% RP	
EPD -0.1	+23	+16	+41	-.31	-.10	+.21	+.009	+.210	
#Pathfinder									
# N Bar Explosion					# N Bar Emulation EXT				
N Bar Explosion TNT					N Bar Kinochtry Beauty 4288				
11726609 N Bar Enchantress U130					# Gardens Transition 7205 S1				
					N Bar Enchantress 4906				
					# Band 602 of Ideal 928 72				
# Band 234 of Ideal 3163					Rito 149 of Ideal 443				
Green Garden Barbie 884 S2					Gardens Alexander 0126C				
11191746 Green Garden Barbella 2107 C					Green Garden Barbella 21 C				
BW 72 WW 611 Rat: 107 YW 891 Rat: 108 PR: 5 WR 99 4 YR 99 Wt. 1390									
Pastured with Gardens Bravo (Ref. Sire F) 5-31 to 8-22									

131 Green Garden Raven 8047 S2

03/15/98		Cow		13124110		8047			
Birth	Wean	Milk	Year	Scrotal	IMF	Rea	Fat	% RP	
EPD +2.1	+33	+11	+60	+.29	+.0	+.10	-.001	-.050	
#Pathfinder									
Gardens Extender					# N Bar Emulation EXT				
Gardens Opto 6071					Summitcrest Estelle Y115				
12555908 Green Garden Rita 227 S2					S A Direct Drive 83				
					# War Rito 9027 5105 7007				
					# Traveler 1148 G D A R				
Gardens Transition 7205 S1					N Bar Clova Pride 2264				
# Green Garden Raven 5046 S1					Gardens Band 91 S1				
12320269 Green Garden Raven 3236 S1					Green Garden Raven 1236 S2				
BW 87 WW 661 Rat: 106 YW 871 Rat: 108 PR: 1 WR 98 YR N/A Wt. 1310									
Pastured with Gardens OB45 9254 S1 (Ref. Sire N) 5-28 to 8-22									

135 Green Garden Jilt 319 S1

02/15/93		Cow		12007698		319-C93			
Birth	Wean	Milk	Year	Scrotal	IMF	Rea	Fat	% RP	
EPD -0.9	+23	+11	+45	+.41	-.03	+.16	-.009	+.170	
#Pathfinder									
Gardens Band 91 S1					# Band 234 of Ideal 3163				
Gardens Band 1015 S1					Shoshone Lucy E C A 29				
11652681 Summitcrest Estelle Y115					Premier Independence K N				
					# Summitcrest Estelle U011				
					# Traveler 1148 G D A R				
Gardens Transition 7205 S1					N Bar Clova Pride 2264				
Green Garden Jilt 021 S1					# N Bar Emulation EXT				
11433392 # Green Garden Jilt 820 S1					Green Garden Jilt 520 C				
BW 64 WW 575 Rat: 99 YW 804 Rat: 100 PR: 1 WR 112 1 YR 111 Wt. N/A									
Pastured with Gardens OB45 9254 S1 (Ref. Sire N) 5-28 to 8-22									

136 Green Garden Dinah 9260 S1

		09/05/99 Cow			13456466			9260		
	Birth	Wean	Milk	Year	Scrotal	IMF	Rea	Fat	% RP	
EPD	+0.2	+34	+22	+71	+19	+02	+10	-007	+190	
#Pathfinder					# Q A S Traveler 23-4					
# R R Traveler 5204					Eriskay of Rollin Rock 3302					
Gardens Prime Time					Gardens Transition 7205 S1					
12007667 # Green Garden Susie 1246 S1					Green Garden Susie 9118 S2					
Basin Rainmaker 2844					# Basin Rainmaker 654X					
Green Garden Dinah 6261 S1					Basin Blackcap Lady B98					
12703252 Garden Dinah 4262 S2					# N Bar Emulation EXT					
					Green Garden Dinah 9262 S2					

Birth 68 WW 585 Rat: 106 YW 775 Rat: 102 Dam's PR: 1 WR 106 1 YR 102 Wt. 1290
 Heifer Calf at side by Gardens OB45 9254 (Ref. Sire N) born 10-13-01, BW 68 lbs.
 Bred AI 12-14-01 to SS T510 (Ref. Sire D) Pastured with Gardens Matrix 12-24-01.

137 Green Garden Dinah 9150 S1

		09/15/99 Cow			13456483			9150		
	Birth	Wean	Milk	Year	Scrotal	IMF	Rea	Fat	% RP	
EPD	-0.5	+31	+16	+67	+51	+01	+0	+005	-160	
#Pathfinder					# Q A S Traveler 23-4					
# R R Traveler 5204					Eriskay of Rollin Rock 3302					
Gardens Prime Time					Gardens Transition 7205 S1					
12007667 # Green Garden Susie 1246 S1					Green Garden Susie 9118 S2					
Gardens Extender					# N Bar Emulation EXT					
Green Garden Dinah 7264 S1					Summitcrest Estelle Y115					
12910077 Green Garden Dinah 3262 S2					# N Bar Emulation EXT					
					Green Garden Dinah 9262 S2					

BW 62 WW 541 Rat: 98 YW 768 Rat: 101 Dam's PR: 2 WR 93 2 YR 98 Wt. 1030
 Heifer Calf at side by Gardens OB45 9254 (Ref. Sire N) born 10-0-01, BW 68 lbs.
 Bred AI 1-30-02 to EXT (Ref. Sire A)

138 Green Garden Rita 9078 S1

		10/04/99 Cow			13456505			9078		
	Birth	Wean	Milk	Year	Scrotal	IMF	Rea	Fat	% RP	
EPD	+0.5	+32	+17	+63	-01	+11	+09	+001	+100	
#Pathfinder					# R R Traveler 5204					
Gardens Prime Time					# Green Garden Susie 1246 S1					
Gardens Prime Time 5091 S1					# S A Direct Drive 83					
12320280 Green Garden Poppy 309 S2					Green Garden Poppy 1948 S1					
# N Bar Emulation EXT					# Emulation N Bar 5522					
Green Garden Rita 7070 S2					N Bar Primrose 2424					
12910053 Green Garden Rita 2027 S2					# S A Direct Drive 83					
					# War Rito 9027 5105 7007					

BW 63 WW 567 Rat: 103 YW 781 Rat: 103 Dam's PR: 1 WR 103 1 YR 103 Wt. 1160
 Bull Calf at side by Gardens OB45 9254 (Ref. Sire N) born 9-26-01, BW 66 lbs.
 Bred AI 12-18-01 to Expedition (Ref. Sire H) Pastured with Gardens Matrix 12-24-01.

139 Green Garden Protet 9245 S1

		10/12/99 Cow			13456512			9245		
	Birth	Wean	Milk	Year	Scrotal	IMF	Rea	Fat	% RP	
EPD	+2.5	+37	+13	+66	-16	+16	+18	+022	-290	
#Pathfinder					# N Bar Emulation EXT					
Gardens Extender					Summitcrest Estelle Y115					
Gardens Opto 6071					# S A Direct Drive 83					
12555908 Green Garden Rita 227 S2					# War Rito 9027 5105 7007					
# N Bar Emulation EXT					# Emulation N Bar 5522					
Green Garden Protet 5245 S2					N Bar Primrose 2424					
12469015 Green Garden Protet 3C6					# Rito 939 of B156 7T26					
					Green Garden Protet 051C					

BW 78 WW 584 Rat: 106 YW 827 Rat: 109 Dam's PR: 4 WR 97 3 YR 100 Wt. 1200
 Bull Calf at side by Gardens OB45 9254 (Ref. Sire N) born 10-8-01, BW 70 lbs.
 Bred AI 12-8-01 to Expedition (Ref. Sire H) Pastured with Gardens Matrix 12-24-01.

140 Green Garden Ella 9258 S1

		08/28/99 Cow			13456456			9258		
	Birth	Wean	Milk	Year	Scrotal	IMF	Rea	Fat	% RP	
EPD	+2.0	+33	+8	+64	-10	-09	+12	+0	-100	
#Pathfinder					# Emulation N Bar 5522					
# N Bar Emulation EXT					Ankony 8F78 Lass 8F275					
10776479 N Bar Primrose 2424					# Emulation 31					
# Schurrtop Fortune 3261					Primrose N Bar 9962					
Green Garden Ella 9255 S2					# Schearbrook Fortune					
11380216 B A F Rito Elban 1061					Schurrtop Queen 1322					
					# Rito Excel 809					
					# Elban Emulous B A F 22					

Birth 71 Wean 447 Rat: 81 Year 685 Rat 90
 Heifer Calf at side by Gardens OB45 9254 (Ref. Sire N) born 10-3-01, BW 70 lbs.
 Bred AI 12-19-01 to Gardens Prime Time (Ref. Sire B) Pastured with Matrix 12-24-01.

141 Green Garden Lass 9031 S1

		04/15/99 Cow			13312766			9 031		
	Birth	Wean	Milk	Year	Scrotal	IMF	Rea	Fat	% RP	
EPD	+1.9	+32	+12	+52	+02	+08	-01	+014	+190	
#Pathfinder					# N Bar Emulation EXT					
Gardens Extender					Summitcrest Estelle Y115					
Gardens Opto 6071					S A Direct Drive 83					
12555908 Green Garden Rita 227 S2					# War Rito 9027 5105 7007					
Gardens Extender					# N Bar Emulation EXT					
Green Garden Lass 6030 S2					Summitcrest Estelle Y115					
12634588 Green Garden Lass					# S A Direct Drive 83					
					Leachman Band Lass 9525					

BW 68 Wean 648 Rat: 103 365 day wt. N/A Dam's PR: 4 WR 100 1 YR 93
 Bull Calf at side by Gardens OB45 9254 (Ref. Sire N) born 9-21-01, BW 74 lbs.
 Bred AI 12-8-01 to Expedition (Ref. Sire H) Pastured with Gardens Matrix 12-24-01.

142 Green Garden Poppy 985R S1

		10/02/99 Cow			13456531			985R		
	Birth	Wean	Milk	Year	Scrotal	IMF	Rea	Fat	% RP	
EPD	+1.9	+27	+9	+48	+02	+01	+04	+019	-470	
#Pathfinder					# N Bar Emulation EXT					
Gardens Extender					Summitcrest Estelle Y115					
Gardens Opto 6071					S A Direct Drive 83					
12555908 Green Garden Rita 227 S2					# War Rito 9027 5105 7007					
Gardens Band 91 S1					# Band 234 of Ideal 3163					
Green Garden Poppy 109 S1					Shoshone Lucy E C A 29					
11652631 Green Garden Poppy 1948 S1					# Band 234 of Ideal 3163					
					Skyland Poppy 194					

Birth 80 Wean 543 Rat: 99 Year 754 Rat: 99
 Bull Calf at side by Gardens OB45 9254 (Ref. Sire N) born 11-4-01, BW 72 lbs.
 Pastured with Gardens Matrix (Ref. Sire G) from 12-24-01 to 2-1-02.

143 Green Garden Jena 9085 S2

		03/28/99 Cow			13312762			9085		
	Birth	Wean	Milk	Year	Scrotal	IMF	Rea	Fat	% RP	
EPD	+2.8	+28	+6	+52	+19	+13	+0	+004	-230	
#Pathfinder					# N Bar Emulation EXT					
Gardens Extender					Summitcrest Estelle Y115					
Gardens Opto 6071					S A Direct Drive 83					
12555908 Green Garden Rita 227 S2					# War Rito 9027 5105 7007					
Gardens Extender					# N Bar Emulation EXT					
Green Garden Jena 6084 S2					Summitcrest Estelle Y115					
12555911 Green Garden Jena 284 S3					V D A R Valiant					
					# Jauer Band 105 651 78					

Birth 82 Wean 586 Rat: 90 Year 832 Rat: 97
 Bull Calf at side by Gardens Highmark (Ref. Sire E) born 10-15-01, BW 71 lbs.
 Bred AI 12-8-01 to Expedition (Ref. Sire H) Pastured with Gardens Bravo 12-24-01.



Gardens EXT Emac 381

Lot 144 is a full sister to Gardens EXT Emac 381, the very successful calving ease herd sire being used at the Molitor Angus Ranch in Zenda, Kansas.

144 Green Garden Eileen 581 S1

		09/03/95		Cow		12469032		581		
	EPD	Birth	Wean	Milk	Year	Scrotal	IMF	Rea	Fat	% RP
		+0.6	+29	+19	+54	-.14	+0.05	+0.0	+0.001	-.040
#Pathfinder										
# Emulation N Bar 5522					# Emulation 31					
#N Bar Emulation EXT					Ankony 8F78 Lass 8F275					
10776479 N Bar Primrose 2424					# Emulation 31					
					Primrose N Bar 9962					
# Lemmon Impact					# Black Witch Corbinaire 95					
#Green Garden Eileen 082 S1					# Lemmon Elga 3020					
11544782 Green Garden Eileen 682 C					Strong Pursuit					
					Green Garden Eileen 171					
BW 68 WW 466 Rat: 96 YW 778 Rat: 97 PR: 4 WR 106 4 YR 103										
Heifer calf at side by Gardens Highmark (Ref. Sire E) born 10-2-01, BW 71 lbs.										
Pastured bred to Gardens Highmark (Ref. Sire E) from 12-1-01 to 2-10-02.										

145 Green Garden Protet 6249 S2

		08/27/96		Cow		12689068		6249		
	EPD	Birth	Wean	Milk	Year	Scrotal	IMF	Rea	Fat	% RP
		+3.1	+33	+14	+63	-.28	+0	+2.1	-.004	-.170
#Pathfinder										
# Emulation N Bar 5522					# Emulation 31					
#N Bar Emulation EXT					Ankony 8F78 Lass 8F275					
10776479 N Bar Primrose 2424					Emulation 31					
					Primrose N Bar 9962					
Gardens Director					# S A Direct Drive 83					
Green Garden Protet 4245 S2					Leachman Band Lass 9525					
12215569 Green Garden Protet 3C6					# Rito 9J9 of B156 7T26					
					Green Garden Protet 051C					
Birth 86 Wean 579 Rat: 110 Year 848 Rat: 109 PR: 3 WR 95 3 YR 97 Wt 1160										
Heifer Calf at side by Gardens Bravo (Ref. Sire F) born 10-6-01, BW 77 lbs.										
Pastured with Gardens Highmark (Ref. Sire E) from 12-1-01 to 2-10-02.										

146 Green Garden Leah 6289 S2

		02/25/96		Cow		12555952		6289		
	EPD	Birth	Wean	Milk	Year	Scrotal	IMF	Rea	Fat	% RP
		+1.4	+39	+6	+65	+0.19	+0.03	+0.06	+0.005	+0.080
#Pathfinder										
# N Bar Emulation EXT					# Emulation N Bar 5522					
N Bar Emulation Ext V722					N Bar Primrose 2424					
11716041 # N Bar Blackbird 4307					# N Bar Moderation 9955					
					N Bar Blackbird 2394					
# Schurrtop Fortune 3261					# Schearbrook Fortune					
Green Garden Leah 9238 S2					Schurrtop Queen 1322					
11268198 Green Garden Leah 4125 C					Stewarts Spartacus					
					Green Garden Elleah 2100 C					
Birth 93 Wean 665 Rat: 106 Year 897 Rat: 106 PR: 2 Wr 90 4 YR 94 Wt 1345										
Bull Calf at side by Gardens Highmark (Ref. Sire E) born 11-7-01, BW 83 lbs.										
Pastured with Gardens Highmark (Ref. Sire E) from 12-1-01 to 2-10-02.										

147 Green Garden Blackcap 6155S1

		08/23/96		Cow		12689062		6155		
	EPD	Birth	Wean	Milk	Year	Scrotal	IMF	Rea	Fat	% RP
		-0.6	+27	+16	+58	+0.24	+0	+0.23	+0.004	+0.180
#Pathfinder										
# R R Traveler 5204					# Q A S Traveler 23-4					
Gardens Prime Time					Eriskay of Rollin Rock 3302					
12007667 # Green Garden Susie 1246 S1					Gardens Transition 7205 S1					
					Green Garden Susie 9118 S2					
Gardens Director					# S A Direct Drive 83					
Green Garden Blackcap 4156S1					Leachman Band Lass 9525					
12215562 Green Garden Blackcap 9156S1					Gardens Transition 7205 S1					
					B A F Captains Lodge 1246					

Birth 64	Wean 549	Rat: 105	Year 763	Rat: 99	PR:3	WR 97	3 YR 103	Wt 1055
Heifer Calf at side by Gardens Highmark (Ref. Sire F) born 11-9-01, BW 70 lbs.								
Pastured with Gardens Highmark (Ref. Sire E) from 12-1-01 to 2-10-02.								

148 Green Garden Ida 555 S1

		08/30/95		Cow		12469027		555		
	EPD	Birth	Wean	Milk	Year	Scrotal	IMF	Rea	Fat	% RP
		+0.4	+18	+19	+43	+0.51	-.02	+0.05	+0.007	+0.010
#Pathfinder										
# R R Traveler 5204					# Q A S Traveler 23-4					
Gardens Prime Time					Eriskay of Rollin Rock 3302					
12007667 # Green Garden Susie 1246 S1					# Gardens Transition 7205 S1					
					Green Garden Susie 9118 S2					
# Traveler 1148 G D A R					# Q A S Traveler 23-4					
Green Garden Ida 7853 S1					# Blackcap Forever 485 G D A R					
11128215 N Bar Lady Ida 6298					N Bar Happy Vale 1356					
					N Bar Lady Ida 3326					

Birth 70	Wean 460	Rat: 95	Year 698	Rat: 87	PR: 4	Wr 97	4 YR 99	Wt 1080
Bull Calf at side by Gardens Bravo (Ref. Sire F) born 11-5-01, BW 77 lbs.								
Pastured bred to Gardens Highmark (Ref. Sire E) from 12-1-01 to 2-10-02.								

149 Green Garden Eulaine 641 S1

		02/20/96		Cow		12555955		641-C96		
	EPD	Birth	Wean	Milk	Year	Scrotal	IMF	Rea	Fat	% RP
		+0.4	+33	+17	+67	+0.50	+0.14	-.01	-.016	-.030
#Pathfinder										
# R R Traveler 5204					# Q A S Traveler 23-4					
Gardens Prime Time					Eriskay of Rollin Rock 3302					
12007667 # Green Garden Susie 1246 S1					Gardens Transition 7205 S1					
					Green Garden Susie 9118 S2					
Gardens Transition 7205 S1					# Traveler 1148 G D A R					
Green Garden Eulaine 0241 S1					N Bar Clova Pride 2264					
11433366 # Green Garden Eulaine 896 S2					# N Bar Emulation EXT					
					Green Garden Eulaine 690C					

Birth 78	Wean NA	Rat: NA	Year 812	Rat: 101	PR: 2	WR 105	2YR 101	Wt 1210
Bull Calf at side by Gardens Highmark (Ref. Sire E) born 11-7-01, BW 83 lbs.								
Pastured with Gardens Highmark (Ref. Sire E) from 12-1-01 to 2-10-02.								

150 Green Garden Raven 833 S1

		09/27/98		Cow		13276081		833		
	EPD	Birth	Wean	Milk	Year	Scrotal	IMF	Rea	Fat	% RP
		+1.6	+30	+17	+66	+0.67	+0.04	+0.08	+0.001	-.130
#Pathfinder										
# N Bar Emulation EXT					# Emulation N Bar 5522					
Gardens EXT 4137 S2					N Bar Primrose 2424					
12166857 # Green Garden Bonnie 1134 S1					Lemmon Impact					
					# Green Garden Bonnie 930 S1					
Gardens Transition 7205 S1					# Traveler 1148 G D A R					
Green Garden Raven 432 S1					N Bar Clova Pride 2264					
12215582 Green Garden Raven 832 S1					# N Bar Emulation EXT					
					Green Garden Raven 333 C					

Birth 76	Wean 484	Rat: 92	Year 770	Rat: 99	PR: 1	WR 101	1 YR 102	Wt 1020
Bull Calf at side by Gardens Highmark (Ref. Sire E) born 10-10-01, BW 82 lbs.								
Pastured with Gardens Bravo (Ref. Sire F) from 12-1-01 to 2-10-02.								

151**Green Garden Robin 817 S1**

		11/21/98			Cow		13167868		817	
	EPD	Birth	Wean	Milk	Year	Scrotal	IMF	Rea	Fat	% RP
		+2.7	+28	+15	+54	+1.0	+0.5	+0.3	+0.22	-2.90
#Pathfinder										
# N Bar Emulation EXT Gardens Extender 12160396 Summitcrest Estelle Y115 Gardens Director Green Garden Blkbd 416 S1 12693999 Blackbird of Valley 19						# Emulation N Bar 5522 N Bar Primrose 2424 Premier Independence K N # Summitcrest Estelle U011 # S A Direct Drive 83 Leachman Band Lass 9525 # Band 234 of Ideal 3163 Blackbird Marolyn V A 148				

Birth 84 Wean 549 Rat: 105 Year 846 Rat: 109 PR: 1 WR 100 1 YR 98 Wt 1040

Heifer Calf at side by Gardens Highmark (Ref. Sire E) born 10-6-01, BW 79 lbs.

Pastured with Gardens Bravo (Ref. Sire F) from 12-1-01 to 2-10-02.

152**Green Garden Jilt 7027 S2**

		10/07/97			Cow		12910046		7027	
	EPD	Birth	Wean	Milk	Year	Scrotal	IMF	Rea	Fat	% RP
		+1.1	+37	+12	+57	+3.3	-.04	+0	+0.001	-.060
#Pathfinder										
# N Bar Emulation EXT Gardens Extender 12160396 Summitcrest Estelle Y115 Gardens Band 1015 S1 Green Garden Jilt 3027 S1 12154947 Green Garden Jilt 1214 S2						# Emulation N Bar 5522 N Bar Primrose 2424 Premier Independence K N # Summitcrest Estelle U011 Gardens Band 91 S1 Summitcrest Estelle Y115 V D A R Valiant Green Garden Jilt 411 C				

Birth 72 Wean 535 Rat: 102 Year 833 Rat: 101 PR: 1 WR 113 1 YR 109 Wt 1150

Heifer Calf at side by Gardens Bravo (Ref. Sire E) born 11-19-01, BW 82 lbs.

Pastured with Gardens Highmark (Ref. Sire E) from 12-1-01 to 2-10-02.

153**Green Garden Emma 6120 S1**

		02/01/96			Cow		12555917		6120	
	EPD	Birth	Wean	Milk	Year	Scrotal	IMF	Rea	Fat	% RP
		+0.4	+19	+10	+45	-.04	-.02	+0	-.007	+0.050
#Pathfinder										
# Traveler 1148 G D A R Gardens Transition 7205 S1 11128214 N Bar Clova Pride 2264 Gardens Fortune 9244 S2 Green Garden Emma 2125 S1 11779113 Green Garden Emma 9122 S1						# Q A S Traveler 23-4 # Blackcap Forever 485 G D A R Ankonian Dynamo Clova Pride N Bar 7352 # Schurrtop Fortune 3261 Green Garden Protet 663C # S S Rito 0715 0H3 Green Garden Emma 7394 C				

Birth 74 Wean 543 Rat: 90 Year 791 Rat: 97 PR: 2 WR 93 2 YR 94 Wt. 1140

Bull Calf at side by Gardens Bravo (Ref. Sire F) born 11-3-01, BW 80 lbs.

Pastured with Gardens Highmark (Ref. Sire E) 12-24-01 to 2-10-02.

154**Green Garden Raven 432 S1**

		09/02/94			Cow		12215582		432	
	EPD	Birth	Wean	Milk	Year	Scrotal	IMF	Rea	Fat	% RP
		+0.6	+25	+13	+58	+1.8	+0.09	-.06	-.006	-.090
#Pathfinder										
# Traveler 1148 G D A R Gardens Transition 7205 S1 11128214 N Bar Clova Pride 2264 # N Bar Emulation EXT Green Garden Raven 832 S1 11252683 Green Garden Raven 333 C						# Q A S Traveler 23-4 # Blackcap Forever 485 G D A R # Ankonian Dynamo Clova Pride N Bar 7352 # Emulation N Bar 5522 N Bar Primrose 2424 # P S Mastermind 908 Green Garden Raven 41C				

Birth 78 Wean 570 Rat: 108 Year 869 Rat: 107 PR: 6 WR 97 6 YR 99 Wt 1216

Heifer Calf at side by Gardens Prime Time (Ref. Sire B) born 9-14-01, BW 79 lbs.

Pastured with Gardens Highmark (Ref. Sire E) 12-24-01 to 2-10-02.

155**Green Garden Ellie 645 S1**

		02/01/96			Cow		12555956		645	
	EPD	Birth	Wean	Milk	Year	Scrotal	IMF	Rea	Fat	% RP
		+0.6	+24	+10	+46	-.06	+0.04	-.13	+0.004	-.110
#Pathfinder										
# Traveler 1148 G D A R Gardens Transition 7205 S1 11128214 N Bar Clova Pride 2264 # Emulation N Bar 5522 Green Garden Pridelia 9206S1 11332003 Green Garden Pridelia 660 C						# Q A S Traveler 23-4 # Blackcap Forever 485 G D A R # Ankonian Dynamo Clova Pride N Bar 7352 # Emulation 31 Ankony 8F78 Lass 8F275 Strong Pursuit Green Garden Pridelia 458 C				

Birth 79 Wean 606 Rat: 101 Year NA Rat: NA PR: 3 WR 94 3 YR 97 Wt 1240

Bull Calf at side by Gardens Bravo (Ref. Sire F) born 10-7-01, BW 81 lbs.

Pastured with Gardens Highmark (Ref. Sire E) 12-24-01 to 2-10-02.

156**Green Garden Jilt 413 S1**

		01/23/94			Cow		12166887		413	
	EPD	Birth	Wean	Milk	Year	Scrotal	IMF	Rea	Fat	% RP
		+2.6	+25	+15	+44	+1.5	+0	-.13	+0.005	-.180
#Pathfinder										
# Traveler 1148 G D A R Gardens Transition 7205 S1 11128214 N Bar Clova Pride 2264 # Emulation N Bar 5522 Green Garden Jilt 911 S1 11331988 Green Garden Jilt 74 C						# Q A S Traveler 23-4 # Blackcap Forever 485 G D A R # Ankonian Dynamo Clova Pride N Bar 7352 # Emulation 31 Ankony 8F78 Lass 8F275 Blackman of A L F 51D Green Garden Jilt C 50				

Birth 84 Wean 539 Rat: 94 Year 824 Rat: 100 PR: 3 WR 104 3 YR 99 Wt 1217

Bull Calf at side by Gardens Bravo (Ref. Sire F) born 9-27-01, BW 83 lbs.

Pastured with Gardens Bravo (Ref. Sire F) 12-24-01 to 2-10-02.

157**Green Garden Estelle 8012 S1**

		10/27/98			Cow		13187349		8012	
	EPD	Birth	Wean	Milk	Year	Scrotal	IMF	Rea	Fat	% RP
		+0.3	+32	+17	+50	-.19	+1.2	+0.2	+0.016	-.080
#Pathfinder										
Gardens Extender Gardens Opto 6071 12555908 Green Garden Rita 227 S2 # G A R Sleep Easy 1009 Green Garden Estelle 6015 S1 12785343 Summitcrest Estelle Y115						# N Bar Emulation EXT Summitcrest Estelle Y115 # S A Direct Drive 83 # War Rito 9027 5105 7007 # Tehama Bando 155 Blacklass G A R 103 # Premier Independence K N # Summitcrest Estelle U011				

Birth 60 Wean 556 Rat: 106 Year 762 Rat: 98 PR: 1 WR 102 1 YR 98 Wt 1040

Bull Calf at side by Gardens Highmark (Ref. Sire D) born 10-13-01, BW 81 lbs.

Pastured with Gardens Matrix (Ref. Sire G) 12-24-01 to 2-10-02.

158**Green Garden Pride 8153 S1**

		10/23/98			Cow		13167910		8153	
	EPD	Birth	Wean	Milk	Year	Scrotal	IMF	Rea	Fat	% RP
		+2.1	+36	+13	+61	-.06	+0	+1.5	+0.019	-.370
#Pathfinder										
Gardens Extender Gardens Opto 6071 12555908 Green Garden Rita 227 S2 Gardens Director # Green Garden Pride 5154 S1 12469009 # Green Garden Pride 2154 S1						# N Bar Emulation EXT Summitcrest Estelle Y115 S A Direct Drive 83 # War Rito 9027 5105 7007 # S A Direct Drive 83 Leachman Band Lass 9525 Gardens Transition 7205 S1 B A F Rito Pride 1892				

Birth 72 Wean 576 Rat: 110 Year 832 Rat: 107 PR: 1 WR 98 1 YR 100

Bull Calf at side by Gardens Bravo (Ref. Sire F) born 11-20-01, BW 79 lbs.

Pastured with Gardens Highmark (Ref. Sire E) 12-24-01 to 2-10-02.

159 #Green Garden Lady 4160 S1

	09/18/94 Cow				12215564 4160				
EPD	Birth	Wean	Milk	Year	Scrotal	IMF	Rea	Fat	% RP
	-0.1	+28	+16	+59	+0.12	+0	+0.43	+0.15	+2.80

#Pathfinder

Emulation N Bar 5522
#N Bar Emulation EXT
10776479 N Bar Primrose 2424

S A Direct Drive 83
Green Garden Lady 1160 S1
11751700 Rito Emulous Lady B A F 148

Emulation 31
Ankony 8F78 Lass 8F275
Emulation 31
Primrose N Bar 9962
Pine Drive Big Sky
Prim Lassie S A 440
Rito Excel 809
Emulous Lady B A F 0237

Birth 59 Wean 533 Rat: 101 Year 843 Rat:104 PR: 5 Wr 101 5 YR 102 Wt 1100
Bull Calf at side by Gardens Highmark (Ref. Sire D) born 10-7-01, BW 79 lbs.
Pastured with Gardens Highmark 12-24-01 to 2-10-02

160 Green Garden Jilt 8042 S1

	10/09/98 Cow				13214463 8042				
EPD	Birth	Wean	Milk	Year	Scrotal	IMF	Rea	Fat	% RP
	+1.1	+38	+17	+67	+0.02	-0.01	+0	+0.025	-0.340

#Pathfinder

Gardens Extender
Gardens Opto 6071
12555908 Green Garden Rita 227 S2

#N Bar Emulation EXT
Green Garden Jilt 7041 S1
12779243 Green Garden Jilt 5040 S1

#N Bar Emulation EXT
Summitcrest Estelle Y115
S A Direct Drive 83
War Rito 9027 5105 7007
Emulation N Bar 5522
N Bar Primrose 2424
Gardens Prime Time
Green Garden Jilt 319 S1

Birth 64 Wean 551 Rat: 105 Year 836 Rat: 108 PR: 1 WR 107 1 YR 100 Wt
Bull Calf at side by Gardens Highmark (Ref. Sire E) born 12-11-01, BW 81 lbs.
Pastured with Gardens Highmark (Ref. Sire E) 12-24-01.

161 Green Garden Poppy 785 S1

	08/30/97 Cow				12911452 785				
EPD	Birth	Wean	Milk	Year	Scrotal	IMF	Rea	Fat	% RP
	+1.4	+20	+15	+43	-0.40	+0.05	+0.24	+0.002	-2.00

#Pathfinder

Scotch Cap
#G T Expo
11160688 #GT Pine Siskin

Gardens Band 91 S1
Green Garden Poppy 109 S1
11652631 Green Garden Poppy 1948 S1

P S Power Play
Hoff Band 07 of S C 509
Pine Drive Big Sky
G T Pioneer Shoshone
Band 234 of Ideal 3163
Shoshone Lucy E C A 29
Band 234 of Ideal 3163
Skyland Poppy 194

Birth 84 Wean 502 Rat: 92 Year 766 Rat: 93 PR: 2 Wr 96 2 YR 98 Wt 1180
Heifer Calf at side by Gardens Bravo (Ref. Sire F) born 9-28-01, BW 77 lbs.
Pastured with Gardens Highmark (Ref. Sire E) 12-24-01 to 2-10-02.

162 Green Garden Blackcap 7155S1

	08/23/97 Cow				12910063 7155				
EPD	Birth	Wean	Milk	Year	Scrotal	IMF	Rea	Fat	% RP
	+0.6	+22	+18	+44	-0.33	-0.02	+0.01	-0.006	+1.00

#Pathfinder

Scotch Cap
#G T Expo
11160688 #GT Pine Siskin

Gardens Director
Green Garden Blackcap 4156S1
12215562 Green Garden Blackcap 9156S1

P S Power Play
Hoff Band 07 of S C 509
Pine Drive Big Sky
G T Pioneer Shoshone
S A Direct Drive 83
Leachman Band Lass 9525
Gardens Transition 7205 S1
B A F Captains Lodge 1246

Birth 72 Wean 455 Rat: 87 Year 738 Rat: 90 PR: 2 WR 102 2 YR 100 Wt 975
Bull Calf at side by Gardens Highmark (Ref. Sire E) born 10-31-01, BW 72 lbs.
Pastured with Gardens Highmark (Ref. Sire E) 12-24-01 to 2-10-02.

163 Green Garden Gina 5269 S1

	08/30/95 Cow				12534987 5269				
EPD	Birth	Wean	Milk	Year	Scrotal	IMF	Rea	Fat	% RP
	-0.8	+19	+18	+54	+0.03	+0	+0.11	+0.003	+1.30

#Pathfinder

Q A S Traveler 23-4
#R R Traveler 5204
10705768 Eriskay of Rollin Rock 3302

Gardens Transition 7205 S1
Green Garden Gina 2268 S2
11918633 Green Garden Gina 0261 S2

Band 234 of Ideal 3163
Q A S Blackbird Eve 601 1
Shoshone Vantage JB23
Eriskay of Rollin Rock 7003
Traveler 1148 G D A R
N Bar Clova Pride 2264
Rambo 465T of J R S
B A F Georgina Excel 1611

A maternal sister to Gardens Expedition, and a 3/4 sister to Gardens Prime Tiime.
Bull Calf at side by Gardens Highmark (Ref. Sire E) born 11-19-01, BW 71 lbs.
Pastured with Gardens Highmark (Ref. Sire E) 12-24-01. PR: 4 Wr 100 4 YR 101.

164 Green Garden Sophie 3256 S3

	09/15/93 Cow				12154962 3256				
EPD	Birth	Wean	Milk	Year	Scrotal	IMF	Rea	Fat	% RP
	+7.1	+29	+12	+61	+0.02	-0.05	+0.41	-0.017	+1.80

#Pathfinder

Scotch Cap
Summitcrest Perfection
11434055 Summitcrest Mamie T009

Rito Excel 809
B A F Captains Lady D990
10291391 Emulous Lady B A F 478

P S Power Play
Hoff Band 07 of S C 509
Premier Independence K N
R&J Duchess 1239
PBC 707 1M E0046
PBC 707 1F E0060
C R R Emulous 26 1 12
C R R 6134 Lady

Birth 96 Wean 472 Rat: 89 Year 904 Rat: 101 PR: 6 Wr 99 6 YR 101 Wt 1200
Bull Calf at side by SST 510 (Ref. Sire D) born 9-23-01, BW 96 lbs.
Pastured with Gardens Bravo (Ref. Sire F) 12-24-01 to 2-10-02.

165 Green Garden Gina 3268 S2

	10/26/93 Cow				12154966 3268				
EPD	Birth	Wean	Milk	Year	Scrotal	IMF	Rea	Fat	% RP
	+5.4	+36	+15	+70	-0.18	-0.15	+0.03	-0.011	+0.080

#Pathfinder

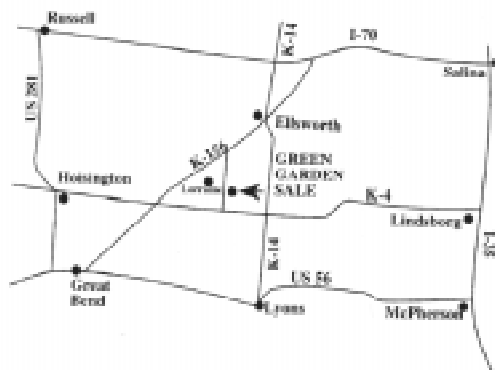
Scotch Cap
Summitcrest Perfection
11434055 Summitcrest Mamie T009

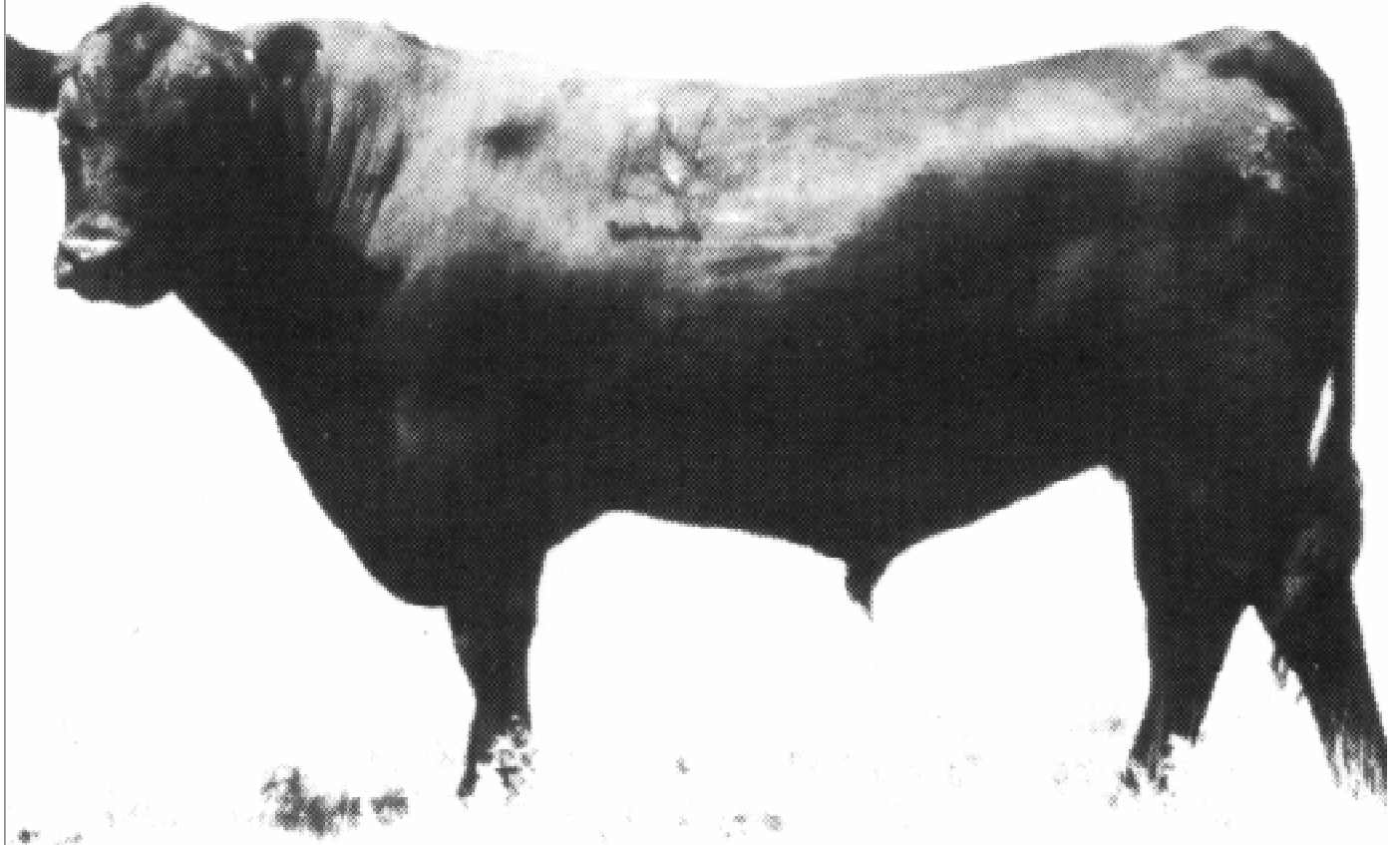
Rambo 465T of J R S
Green Garden Gina 0261 S2
11650542 B A F Georgina Excel 1611

P S Power Play
Hoff Band 07 of S C 509
Premier Independence K N
R&J Duchess 1239
Shadymere Freedom 3J5
J R S Pride Lady 171M
Rito Excel 809
B A F Rowley Georgina 935

Birth 88 Wean 601 Rat: 113 Year 969 Rat: 108 PR:6 WR 103 6 YR 104 Wt 1160
Bull Calf at side by EXT (Ref. Sire A) born 9-15-01, BW 86 lbs.
Pastured with Gardens Bravo (Ref. Sire E) 12-24-01 to 2-10-02.

Directions to Sale





Green Garden Angus Farm

The Janssen Family
1356 Ave. M
Ellsworth, Kansas 67439